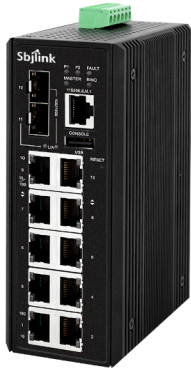


RPT-2012-2G2F-X4**Industrial 12 Ports Managed Switch****FEATURE HIGHLIGHTS**

- 8-port 10/100Base-T(X) Ethernet
- 2-port 10/100/1000Base-T(X) Gigabit Ethernet
- 2-port dual rate 100/1000Base-(F)X SFP slots
- Redundancy: G.8032 ERPS v2/ STP/ RSTP/ MSTP
- IP route for routing function
- RADIUS, TACACS+ authentication protocol
- Security: SNMP v1/v2c/v3, ACL, IP source guard
- Redundant power inputs design

DESCRIPTION

RPT-2012-2G2F-X4 Series are 12-port full managed Ethernet switch, which provides 8*10/100Base-T(X), 2*10/100/1000Base-T(X) copper ports and 2*100/1000 Base-(F)X SFP slots. RPT-2012-2G2F-X4 Series supports power inputs redundancy and standardized network redundancy ITU-T G.8032 ERPS v2 (Ethernet Ring Protection Switch) protocol, providing <50ms recovery time to the network.

RPT-2012-2G2F-X4 Series provides comprehensive network security and management capability by supporting Multiusers account, IGMP, GVRP, VLAN, QoS, SNMP, RADIUS, TACACS+, Aggregation(Static, LACP), SSH, SSL, IP source guard to create a highly-secured network environment.

RPT-2012-2G2F-X4 Series as an industrial Ethernet switch product line, is designed to withstand harsh and extreme environment conditions. With fanless design, RPT-2012-2G2F-X4 supports extremely temperature, from -40 to 75 degree C.

SPECIFICATIONS

Technology	
Standards	IEEE 802.3 10Base-T Ethernet
	IEEE 802.3u 100Base-TX and 100Base-FX Fast Ethernet
	IEEE 802.3ab 1000Base-T Gigabit Ethernet
	IEEE 802.3z 1000Base-X Gigabit Fiber
	IEEE 802.3x Flow Control
	IEEE 802.1d STP (Spanning Tree Protocol)
	IEEE 802.1w RSTP (Rapid Spanning Tree Protocol)
	IEEE 802.1s MSTP (Multiple Spanning Tree Protocol)
	ITU-T G.8032 / Y.1344 ERPS v1/v2(Ethernet Ring Protection Switch)
	IEEE 802.1Q Virtual Local Area Network (VLAN)
	IEEE 802.1p QoS/CoS Protocol for Traffic Prioritization
	IEEE 802.1X Network Authentication
	IEEE 802.1AB Link Layer Discovery Protocol (LLDP)
IEEE 802.3ad Link Aggregation (LACP)	
Processing Type	Store and Forward
Flow Control	IEEE 802.3x flow control, back pressure flow control
Network Management	
Management	IPv4/IPv6, SNMP v1/v2c/v3, LLDP, LLDP-MED, HTTP, HTTPS, SSHv2 telnet, DHCP client, DHCPv6 client, DHCP server, Port Mirror, DNS client/proxy, IP based Access Filter, ICMPv6, syslog, Time Zone / Daylight Saving, NTP client, RMON, sFlow, Loop detection, Console Port, USB configuration backup/restore, Power lost warning, relay trigger
Security	Port-based/Single/Multi 802.1X, ACL(Port/Rate Limiters/ACE), MAC-based Authentication, VLAN assignment, QoS Assignment, Private VLAN, Guest VLAN, RADIUS accounting, TACACS+, IP MAC binding, WEB/CLI authentication, Authorization (15 levels), Port Security Limit Control, ACLs for filtering/policing/port copy, IP source guard, ARP Inspection
L2 Switching	Port/MAC/Protocol/IP Subnet-based VLAN, GARP/GVRP, Loop Guard, Link Aggregation static/LACP, BPDU guard, Error disable recovery, IGMP snooping v2/v3, MLD snooping v1/v2, IGMP filtering, IPMC throttling / filtering leave proxy, DHCP snooping, G.8032 v1/v2
L3 Switching	DHCP option82, IP route
QoS	802.1p Queueing, Input priority mapping, Storm control for Unicast/Multicast/Broadcast, Port/Queue/ACL policer, Port egress shaper, Queue egress shaper, DiffServ (DSCP), Tag remarking, Scheduler mode
Power Saving	ActiPHY, PerfectReach, IEEE 802.3az EEE power management
Network Redundancy	STP/RSTP/MSTP, port trunk with LACP, ERPS v1/v2 (<50ms)
Configuration	Http, Https, Telnet, SSH, CLI, TFTP, SNMP v3
System / Diagnostics	Dual Image Protection, PING, PING6

SPECIFICATIONS
Switch Properties

Switching Fabric (Back-Plane)	9.6Gbps
Priority Queues	8
Max. Number of VLANs	4095
VLAN ID Range	VID 1 to 4095
Memory Buffer	4Mbits
Jumbo Frame	9.6Kbytes
MAC Table Size	8K
IGMP Group	1024
Transfer Rate	14,880pps for Ethernet port
	148,800pps for Fast Ethernet port
	1,488,000pps for Gigabit Ethernet port

Interface

RJ45 Ports	8*10/100Base-T(X) and 2*10/100/1000Base-T(X) Auto-Negotiation, Full/Half Duplex, Auto-MDI/MDI-X
Fiber Port	2*100/1000Base-(F)X SFP slots
Wavelength	Depends on SFP modules
LED Indicators	System: Power 1, Power 2, Master, Ring, Fault
	Ethernet ports: Speed/Link/Active SFP: Link/Active
RS232 Serial Console	1*RS232 in RJ45 connector with console cable, baud rate 115,200bps,8,N,1
Configuration Backup	1*USB 2.0 host (type-A) for configuration backup/restore
Relay Contact	24 VDC, 1A resistive
Network Cable	10Base-T:2-pair UTP/STP Cat. 3, 4, 5 cable EIA/TIA-568 100-ohm (100m)
	100Base-TX:2-pair UTP/STP Cat. 5 cable EIA/TIA-568 100- ohm (100m)
	1000Base-T: 4-pair UTP/STP Cat.5/5E cable; EIA/TIA-568 100-ohm (100m)
Optical Cable	Multi-mode cable - 50/125um or 62.5/125um,
	Single-mode cable - 9/125um or 10/125um

Power Requirements

Input Voltage	Dual 12-48VDC redundant power inputs
Power Connection	1 removable 6-contact terminal block
Overload Current Protection	Present (Slow-Blow Fuse)
Reverse Polarity Protection	Present
System Power Consumption	Max. 15W full loading

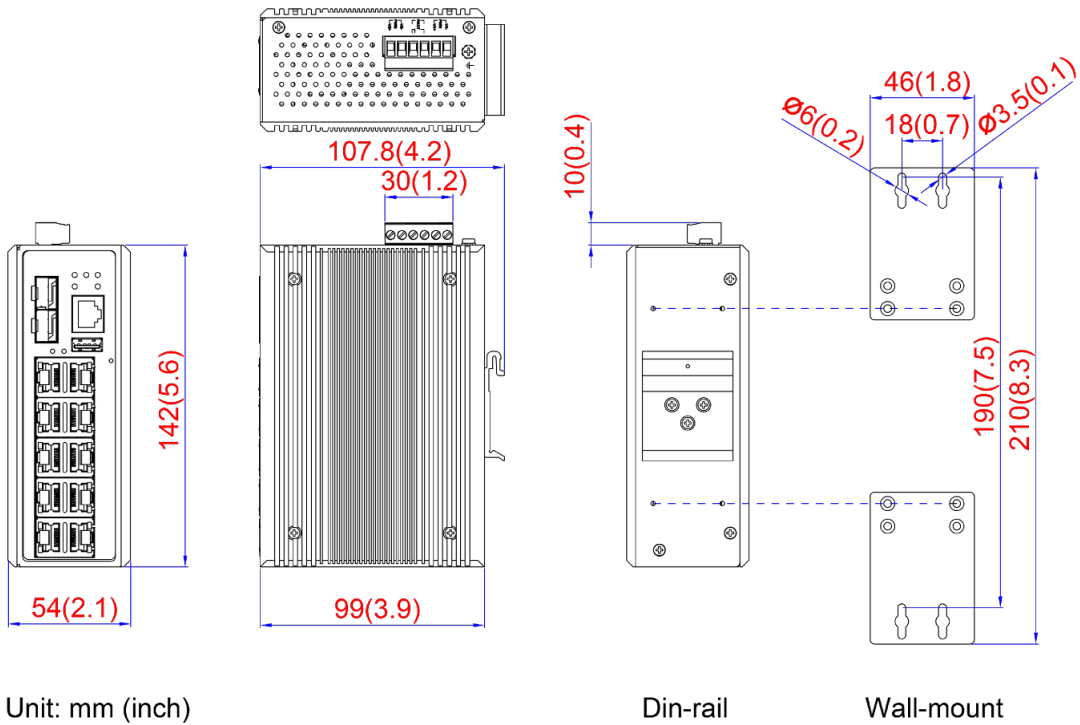
SPECIFICATIONS

Mechanical Characteristics	
Housing	Metal, IP30 protection
Dimensions (W x H x D)	54 x 142 x 99 mm (2.13 x 5.59 x 3.9 inch)
Weight	Unit weight: 0.9kg (1.98 lb) Shipping weight: 1.3kg (2.87 lb)
Mounting	DIN-Rail Mounting, Wall Mounting
Environmental Limits	
Operating Temperature	Standard: -10°C ~ 65°C (14°F ~ 149°F) Extend: -40°C ~ 75°C (-40°F ~ 167°F)
Storage Temperature	-40°C ~ 85°C (-40°F ~ 185°F)
Ambient Relative Humidity	5 to 95%, (non-condensing)
Regulatory Approvals	
EMI	FCC Part 15 Subpart B Class A, CE EN55022/EN61000-6-4 Class A
EMS	CE EN55024/EN61000-6-2 Class A: IEC61000-4-2 (ESD), IEC61000-4-3 (RS), IEC61000-4-4 (EFT), IEC61000-4-5 (Surge), IEC61000-4-6 (CS), IEC61000-4-8 (Magnetic Field)
Free Fall	IEC60068-2-32
Shock	IEC60068-2-27
Vibration	IEC60068-2-6
Green	RoHS Compliant
Safety	UL61010-1, UL61010-2-201
Compliance	NEMA TS2 (ITS) (apply by request)
MTBF	570,911 hrs. (Telcordia SR-332, Issue 3, GB, 25°C)

RPT-2012-2G2F-X4

Industrial 12 Ports Managed Switch

DIMENSION



ORDERING INFORMATION

Model Name	Software	10/100 TX	10/100/1000TX	100/1000 FX	Operating Temperature	Power input
RPT-2012-2G2F-X4	L2	8	2	2 SFP	-10°C ~ 65°C	12-48VDC redundant
RPT-2012-2G2F-T-X4	L2	8	2	2 SFP	-40°C ~ 75°C	12-48VDC redundant