

DRPC-240-TGL-U

■ Fanless DIN-Rail Embedded System
 ■ Tiger Lake 11th Gen Intel® Core™
 Solution (up to 4 cores)

Preliminary

Features

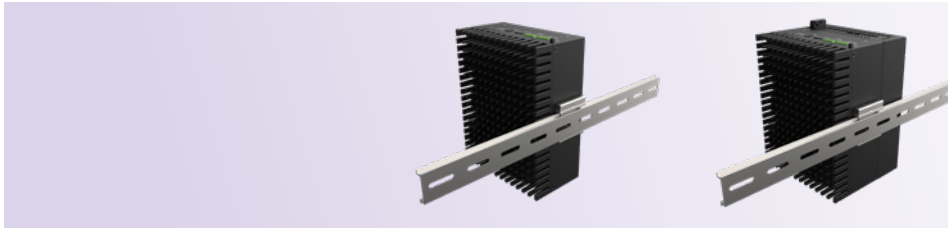
- Supported CPUs:
 - Intel® Celeron® 6305 1.8GHz (dual-core, 15W TDP)
 - Intel® Core™ i5-1145G7E 1.5GHz (up to 4.1GHz, quad-core, 15W TDP)
 - Intel® Core™ i7-1185G7E 1.8GHz (up to 4.4GHz, quad-core, 15W TDP)
- 4 x 2.5GbE ports, supporting PoE (optional)
- Two RS-232 & two RS-422/485 (with 2.5kV isolation)
- CE/FCC compliant



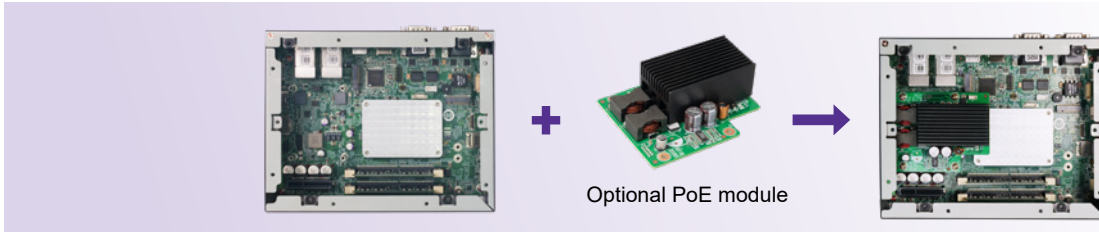
Specifications

Model Name		DRPC-240-TGL-U-i7CS-R10	DRPC-240-TGL-U-i5CS-R10	DRPC-240-TGL-U-CCS-R10
Chassis	Color	Black		
	Dimensions (WxDxH) (mm)	81 x 150 x 190		
	System Fan	Fanless		
	Chassis Construction	Extruded aluminum alloys		
Motherboard	CPU	Intel® Core™ i7-1185G7E 1.8 GHz (up to 4.4 GHz, quad-core, TDP 15W)	Intel® Core™ i5-1145G7E 1.5 GHz (up to 4.1 GHz, quad-core, TDP 15W)	Intel® Celeron® 6305 1.8 GHz (dual-core, TDP 15W)
	Chipset	SoC		
	BIOS	BIOS		
	Memory	2 x SO-DIMM DDR4 3200 MHz (8 GB pre-installed) Support in-band ECC		
Storage	HDD Bay	1 x 2.5" SATA 6Gb/s HDD/SSD bay		
I/O Interfaces	USB	2 x USB 3.2 Gen 2 2 x USB 2.0		
	Ethernet	4 x RJ-45: 1 x 2.5GbE by Intel® I225LM 3 x 2.5GbE by Intel® I225V (colay I225LM) *All four ports support/reserve TSN/TCC function; support optional PoE of module		
	Port	2 x RS-422/485 with AFC (DB-9, with 2.5kV isolation) 2 x RS-232 (DB-9, with 2.5kV isolation)		
	Digital I/O	12-bit Digital I/O (6-in/ 6-out)		
	Display	1 x HDMI (up to 3840 x 2160@30Hz) 1 x DP++ (up to 4096 x 2304@60Hz)		
	Wireless	1 x 802.11a/b/g/n/ac (optional)		
	TPM	Support Intel PTT		
	Others	1 x Power button, 1 x Reset button, 1 x AT/ATX switch, 1 x Power LED (green), 1 x HDD LED (yellow), 4-pin external system fan connector		
Expansions	M.2	1 x 2230 A-key (PCIe x1/USB 2.0) 1 x 3042/52/80 B-key (PCIe x2/USB 3.0/USB 2.0)		
	Backplane	1 x PCIe Gen 3 x4 (optional)		
Power	Power Input	Terminal block: 12 ~ 28V DC		
	Power Consumption	12V @ 6.98A (Intel® Core™ i5-1145G7E with 8GB memory)		
Reliability	Mounting	DIN-Rail		
	Operating Temperature	-20°C ~ 60°C with air flow (SSD), 10% ~ 95% non-condensing		
	Storage Temperature	-40°C ~ 85°C, 10% ~ 95% non-condensing		
	Operating Shock	Half-sine wave shock 5G, 11ms, 100 shocks per axis (SSD)		
	Operating Vibration	MIL-STD-810G 514.6C-1 (SSD)		
	Weight (Net/Gross)	2.15/2.5 kg		
	Safety/EMC	CE/ FCC		
	Watchdog Timer	Programmable 1 ~ 255 sec/min		
OS	Supported OS	Microsoft® Windows 10 / Windows 11, Linux		

Support DIN-rail Mount

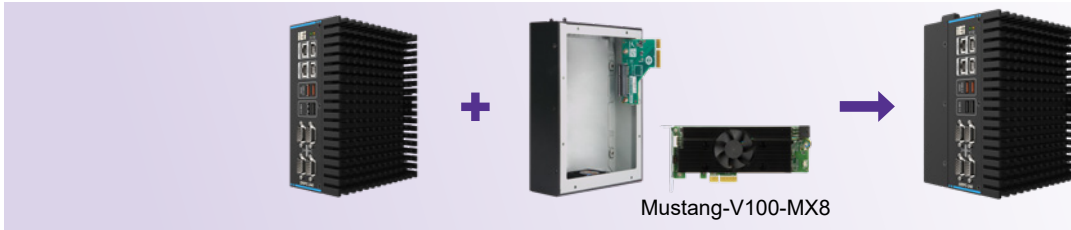


Optional PoE Module



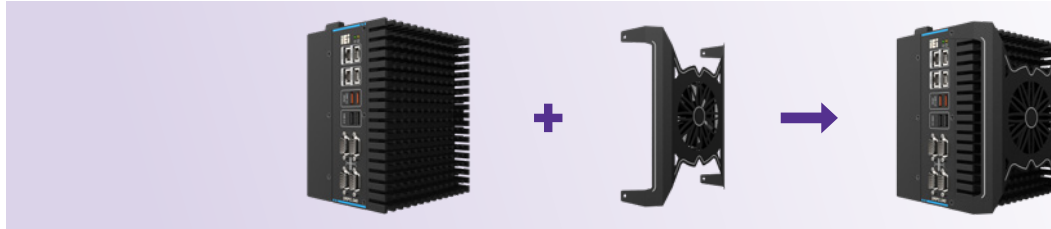
Support Chassis Expansion

The expansion chassis provides one PCIe x4 slot for IEI Mustang accelerator card.



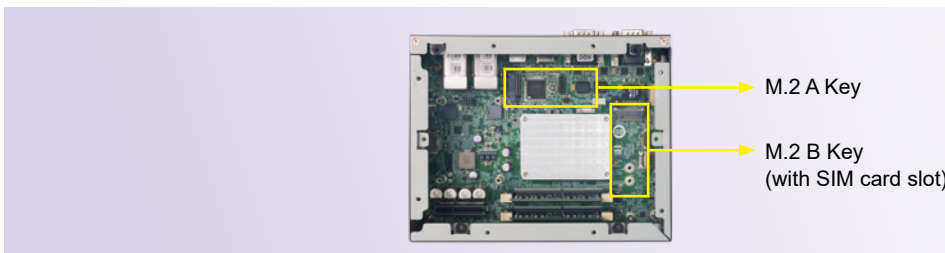
External Fan

Installing an external fan helps to increase system performance in harsh environment.



Internal M.2 Expansion

The system motherboard has one M.2 A key slot and one M.2 B key slot. The A key slot supports Wi-Fi or Bluetooth expansion; the B key slot (with SIM card holder) can support 4G modules or accelerator cards.



Built-in 11th Gen Intel® CPU

It is powered by 11th Gen Intel® Core™ i7/i5 or Celeron® processor (FCBGA 1449) to unleash optimal performance and multitasking capability.

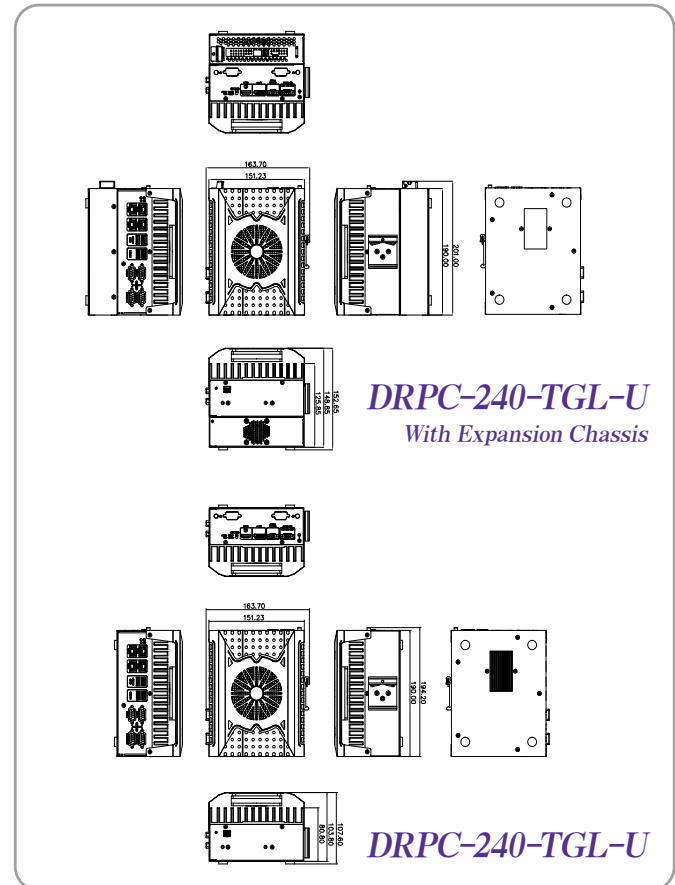
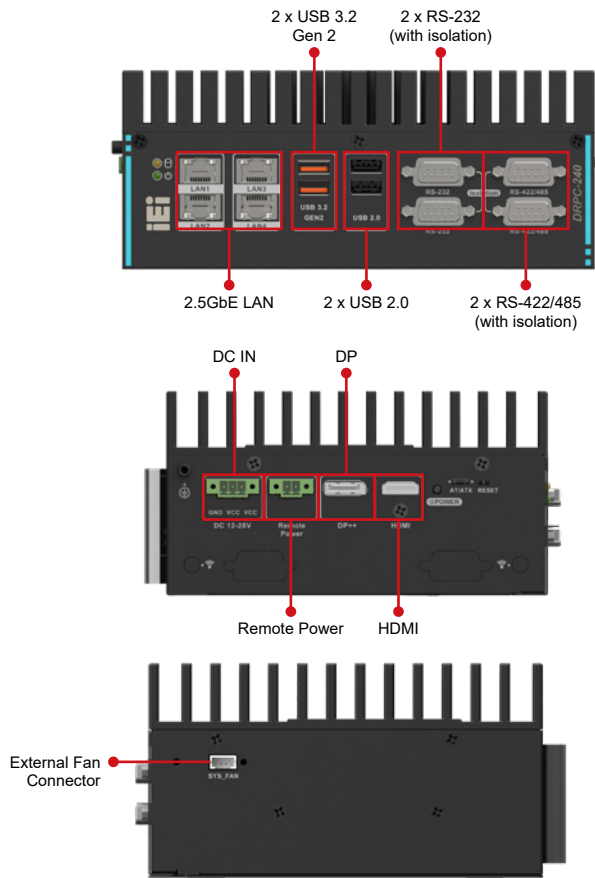
Built-in Intel® I225-LM (V) 2.5GbE Controllers

Four RJ-45 Ethernet ports on the I/O panel through Intel® I225-V GbE controllers provide up to 2.5G network transmission rate, and support optional PoE modules.

USB 3.2 Gen 2 Ports, up to 10Gb/s

Fully Integrated I/O

Dimensions (Unit: mm)



Ordering Information

Part No.	Description
DRPC-240-TGL-U-CCS-R10	Fanless embedded system, Intel® Tiger Lake-U Celeron® 6305 1.8GHz (dual core, TDP 15W), 8GB DDR4 pre-installed memory, HDMI/DP++, 4 x 2.5GbE LAN, 4 x COM, DIO, 12~28V DC and RoHS
DRPC-240-TGL-U-i5CS-R10	Fanless embedded system, Intel® Tiger Lake-U i5-1145G7E 1.5GHz (quad core, TDP 15W), 8GB DDR4 pre-installed memory, HDMI/DP++, 4 x 2.5GbE LAN, 4 x COM, DIO, 12~28V DC and RoHS
DRPC-240-TGL-U-i7CS-R10	Fanless embedded system, Intel® Tiger Lake-U i7-1185G7E 1.8GHz (quad core, TDP 15W), 8GB DDR4 pre-installed memory, HDMI/DP++, 4 x 2.5GbE LAN, 4 x COM, DIO, 12~28V DC and RoHS

Options

Part No.	Description
EMB-WIFI-KIT0213-R10	2T2R M.2 wifi module kit for embedded system, IEEE802.11a/b/g/n/ac/ax, 1 x M.2 AE Key Wireless LAN & Bluetooth 5.2; Intel; AX210; NGWG Module, 2 x RF cable, 2 x Antenna; RoHS
GPOE-DRPC-240-R10 ¹	PoE power module for DRPC-240 only
SF-DRPC-240-R10	External fan for DRPC-240 only
TXC-DRPC-240-1S-R10	DRPC-240 Series 1 Slot Expansion Chassis with Riser Card
32031-000600-100-RS	ROUND CABLE; DIO CABLE; 2; 150mm; 28AWG; 300V; (A) D-SUB 15P MALE; (B) DU PONT 2*7P P=2.0 FEMALE; Wins Precision; C24210815-0; RoHS
32205-003800-300-RS	FLAT CABLE; RS-232/422/485; RS-422/485 CABLE; 2; 200MM; 28AWG; (A) D-SUB 9PIN MALE; (B) JST PHR-4 P=2.0; ONE PCS PKG W/ LABEL; Wins Precision; RoHS
32702-000400-200-RS	POWER CORD; EUROPEAN CODE (VDE); 2; 1800MM; (A) PLUG: SH-025 (16A/250V); (B) CONNECTOR: C5 (SM112, 2.5A/250V); Self-Man; CCL; RoHS
41019-2312C2-00-HF	HOLDER; FAN FILTER BRACKET; NCT processing formation; DRPC-240-ULT6; PAINTING; PMS Black C; 41019-2312XX; NCT(N); SECC; VER:00; CCL; Halogen Free
32102-054800-100-RS	WIRE CABLE; POWER CABLE; 2; 200mm; 18AWG; 300V; (A) POWER DIN 4P FEMALE; (B) TERMINAL BLOCK-3P P=3.5; Wins Precision; C24210816-0; RoHS
63040-010230-000-RS	Adapter Power; FSP; FSP220-ABAN2; 9NA2200401; Active PFC; Vin: 90~264VAC; 220W; Cable=1500mm; Erp(NO LOAD 0.5W); Vout: 19VDC; Din 4Pin; CCL; RoHS
63040-010120-300-RS ²	Adapter Power; FSP; FSP120-AHAN3; 9NA1206708; Active PFC; Vin: 90~264VAC; 120W; Dim: 75.6*151.3*25.4mm; Plug=6.5mm; Cable=1500mm; Erp(NO LOAD 0.15W); Vout: 12VDC; Din 4Pin/lock; CCL; RoHS
Mustang-V100-MX8-R11 ³	Computing Accelerator Card with 8 x Movidius Myriad X MA2485 VPU, PCIe Gen 2 x4 interface, RoHS

¹ For the PoE module, it is suggested to use a 180W (or above) power adapter (63040-010230-000-RS 220W is recommended), and the PoE module can only be used in the single-layer model.
² The power adapter must be used with the 32102-054800-100-RS power cable.
³ For IEI Mustang accelerator card, it is suggested to use a 180W (or above) power adapter (63040-010230-000-RS 220W is recommended), and the Mustang can only be used in the dual-layer model.

Packing List

1 x DIN-Rail mounting kit	1 x Screw pack	1 x Terminal block
---------------------------	----------------	--------------------