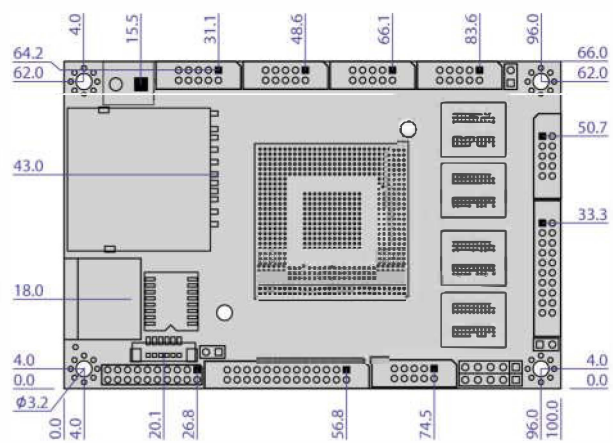
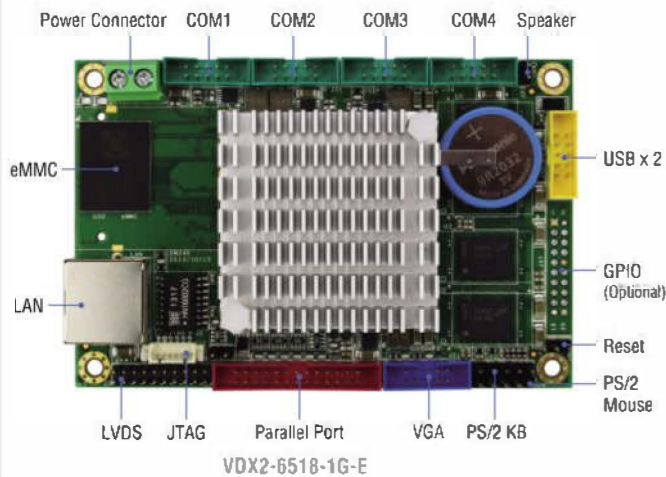


VDX2-6518

1GB/4S/2USB/VGA/LVDS/LAN/
eMMC(or SD Card Slot)/PWM



Unit: mm

Specifications

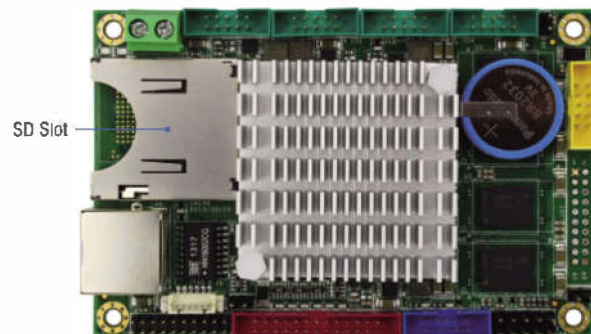
Processor	DM&P SoC CPU Vortex86DX2- 800MHz Real Time Clock with Lithium Battery Backup
Cache	L1:16K I-Cache, 16K D-Cache, L2 Cache 256KB
BIOS	AMI BIOS
System Memory	1GB DDR2 Onboard
Watchdog Timer	Software programmable from 30.5μ sec.to 512 sec. x 2 sets
O&I Sets	(Watchdog 1 fully compatible with M6117D)
VGA	Integrated 2D VGA chip VGA and TFT/LVDS Flat Panel Interface Support (Either VGA or LCD) Share system memory 16MB/32MB, Mono, DSTN, STN, TFT Flat Panel interface support & resolution up to 1280x1024, 16M colors
LAN	Integrated 10/100Mbps Ethernet x1
Flash Disk Support	Onboard 4MB SPI Flash Disk Onboard eMMC 8 GB (Optional) SD card slot (Optional)
I/O Interface	RS-232 port x3 RS-232/422/485 port x1 USB port (Ver2.0) x2 Parallel port x1 8-bit GPIO port x1 (Optional) 10/100Mbps Ethernet port x1
Connectors	2.0mm 26-pin box header for Printer x1 2.0mm 20-pin box header for 16-bit GPIO x1 (Optional) 2.0mm 10-pin box header for USB x1 2.0mm 10-pin box header for RS-232 x4 2.0mm 2-pin header for Reset x1 2.0mm 16-pin header for LVDS x1 2.00 mm 10-pin box header for VGA x1 2.54 mm 5-pin box header for Keyboard x1 2.54 mm 5-pin header for Mouse x1 1.25 mm 6-pin water for JTAG x1 External RJ-45 connector for Ethernet x1
Power Requirement	Single Voltage +5V@720mA
Weight	63g
Dimensions	100mm x 66mm (3.94 x 2.6 inches)
Operating Temperature	-10°C ~ +60°C
Operating System Support	DOS, WinCE 6.0, WinCE 7.0, Linux, Windows 7, Windows Embedded Standard (XPE)

Packing List

- VDX2-6518 x1
- Cable
RS-232 (2.0) x4
GPIO (2.0) x1 (Optional)
USB (2.0) x1
VGA (2.0) x1
PRINT (2.0) x1
PS/2 Mouse cable x1
PS/2 Keyboard cable x1

Ordering information

- **VDX2-6518-1G-E** Vortex86DX2 Tiny CPU Module with 1GB DDR2 & eMMC
- **VDX2-6518-1G-S** Vortex86DX2 Tiny CPU Module with 1GB DDR2 & SD



VDX2-6518-1G-S