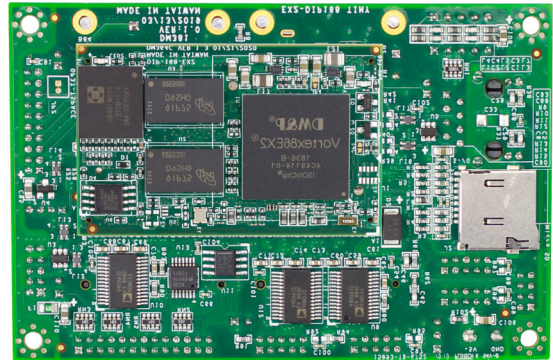
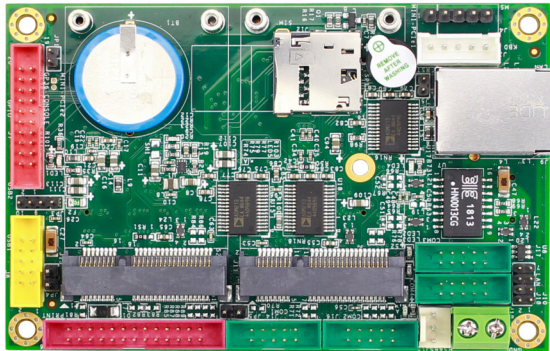


# VEX2-6415



## Specifications

|                       |  |  |  |
|-----------------------|--|--|--|
| CPU                   | DM&P Vortex86EX2 Processor 600MHz  |  |  |
| RAM                   | 512MB/1GB DDR3 Onboard   |  |  |
| BIOS                  | Coreboot BIOS  |  |  |
| Expansion             | Mini PCIe x 2  |  |  |
| LAN                   | Integrated 10/100Mbps Ethernet x 2   |  |  |
| Disk Support          | Micro SD Card  | Micro SD Card/eMMC(Optional)   |  |
| I/O Interface         | COM x 4 (2 x RS232/485)  | 16-bit GPIO x 1  | USB (Version. 2.0) x 2   |
| Connectors            | 2.54mm 5-pin pin header for Mouse x 1<br>2.00mm 2-pin pin header for Reset x 1<br>2.00mm 8-pin pin header for LAN x 1<br>2-pin header for Power connector x 1<br>SIM Card slot x 1 | 2.54mm 5-pin box header for Keyboard x 1<br>2.00mm 10-pin box header for USB x 1<br>2.00mm 10-pin box header for COM x 4<br>2.00mm 20-pin box header for Print x 1<br>Micro SD slot x1 | 2.00mm 20-pin box header for GPIO x 1<br>2.00mm 2-pin pin header for Console jumper x 1<br>2.00mm 4-pin pin header for USB x 1<br>RJ45 connector x 1 |
| Power Requirement     | 5VDC @ 480mA   |  |  |
| Operating Temperature | -20°C - +70°C<br>-40°C - +85°C (Option)  |  |  |
| Dimension             | 100 x 66mm (3.94 x 2.6 inches)   |  |  |
| Weight                | 75g  |  |  |
| O/S Support           | Windows Embedded Compact 7<br>QNX  | Windows Embedded CE6.0<br>FreeBSD  | Linux<br>DOS   |

## Ordering Information

| PART NO.        | CPU Speed | DRAM (DDR3) | Disk Support              | LAN | COM | USB | GPIO   | Parallel | PS/2 | MiniPCIE |
|-----------------|-----------|-------------|---------------------------|-----|-----|-----|--------|----------|------|----------|
| VEX2-6415-4C4NE | 600MHz    | 1GB         | Micro SD Card x2          | 2   | 4   | 2   | 16-bit | 1        | 2    | 2        |
| VEX2-6415-4C3NE | 600MHz    | 512MB       | Micro SD Card x2          | 2   | 4   | 2   | 16-bit | 1        | 2    | 2        |
| VEX2-6415-4C4EE | 600MHz    | 1GB         | Micro SD Card<br>4GB eMMC | 2   | 4   | 2   | 16-bit | 1        | 2    | 2        |