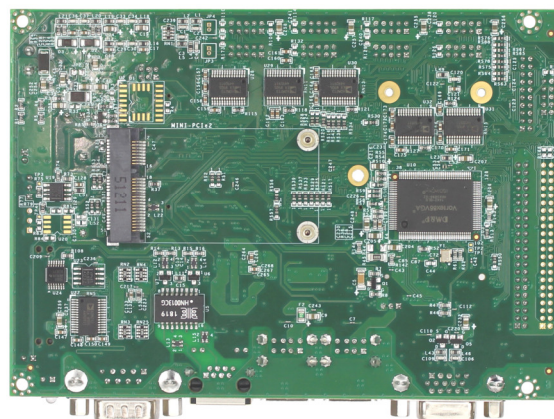
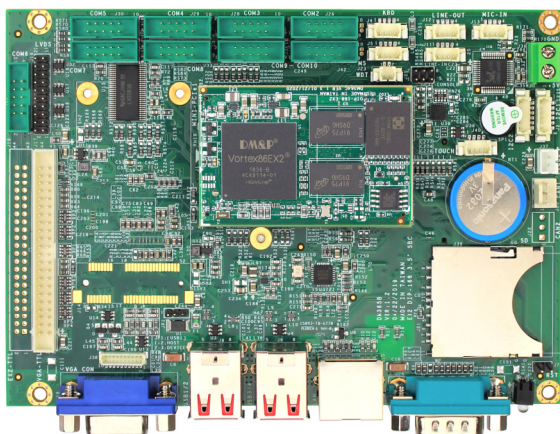


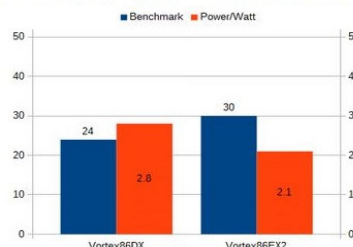
VEX2-6427



Specifications

CPU	DM&P Vortex86EX2 Processor 600MHz		
RAM	512MB/1GB DDR3 Onboard		
BIOS	Coreboot BIOS		
Expansion	MiniPCIe x2 (Option)		
Display	Integrated 2D VGA chip with VGA and TFT Flat Panel Interface Support VGA: resolution up to 1024 x 768 @ 60Hz LCD: resolution up to 1024 x 768 @ 60Hz LVDS: resolution up to 1024 x 768 @ 60Hz, single channel 24-bit		
LAN	Integrated 10/100Mbps Ethernet		
Audio	Realtek ALC262	Buzzer	
Disk Support	SD Card	Micro SD Card/eMMC (Option)	
I/O Interface	COM x10 (2x RS232/485) CAN bus x2 (Option) 12-bit ADC x 8 (Option)	USB x4 Touch function x1 (Option)	I ² C x2 PS/2 x 2
Connectors	1.25mm 4-pin wafer for I ² C x2 1.25mm 4-pin wafer for Touch function x1 (Option) 1.25mm 4-pin wafer for Line-in, Line-out, MIC-in x3 15-pin D-sub female connector for VGA x1 SD Card slot x1	1.25mm 4-pin wafer for Keyboard x1 2.0mm 10-pin box header for COM x9 (Option) 2.54mm 3-pin molex for CAN Bus x2 (Option) MiniPCIe slot x2 (Option) USB connector x4	1.25mm 4-pin wafer for Mouse x1 2.0mm 44-pin box header for LCD x1 2.0mm 20-pin header for LVDS x1 9-pin D-sub male connector for COM x1 RJ45 connector x1
Power Requirement	5VDC @ 670mA		
Operating Temperature	-20°C to +70°C -40°C to +85°C (Optional)		
Dimension	102 x 146mm		
Weight	130g		
O/S Support	Windows Embedded Compact 7 QNX	Windows Embedded CE6.0 FreeBSD	Linux DOS

Benchmark & Power Consumption Index



Perfect Replacement Solution for Vortex86 DX Platform

1. CPU instruction upgrade
2. DRAM from DDR2 to DDR3
3. Manufacturing process from 90nm to 65nm

Ordering Information

PART NO.	CPU Speed	DRAM (DDR3)	Disk Support	Display	LAN	USB (Ver. 2.0)	COM	I ² C	CAN Bus	Audio	MiniPCIe
VEX2-6427-5C4NE	600MHz	1GB	SD Card, Micro SD Card	Frame Buffer LCD, LVDS			5		2		2
VEX2-6427-10C4VNE	600MHz	1GB		LCD, LVDS, VGA	1	4	10	2	1	Line-in Line-out MIC-in. Buzzer	1
VEX2-6427-10C4VEE	600MHz	1GB	4GB eMMC SD Card	LCD, LVDS, VGA			10		1		1