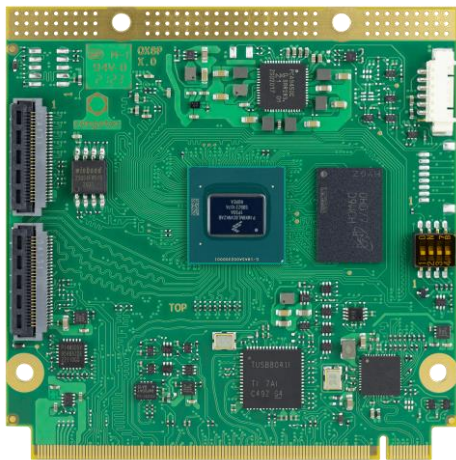


# NXP i.MX 8M Plus for Industry 4.0 & AI

## conga-QMX8-Plus

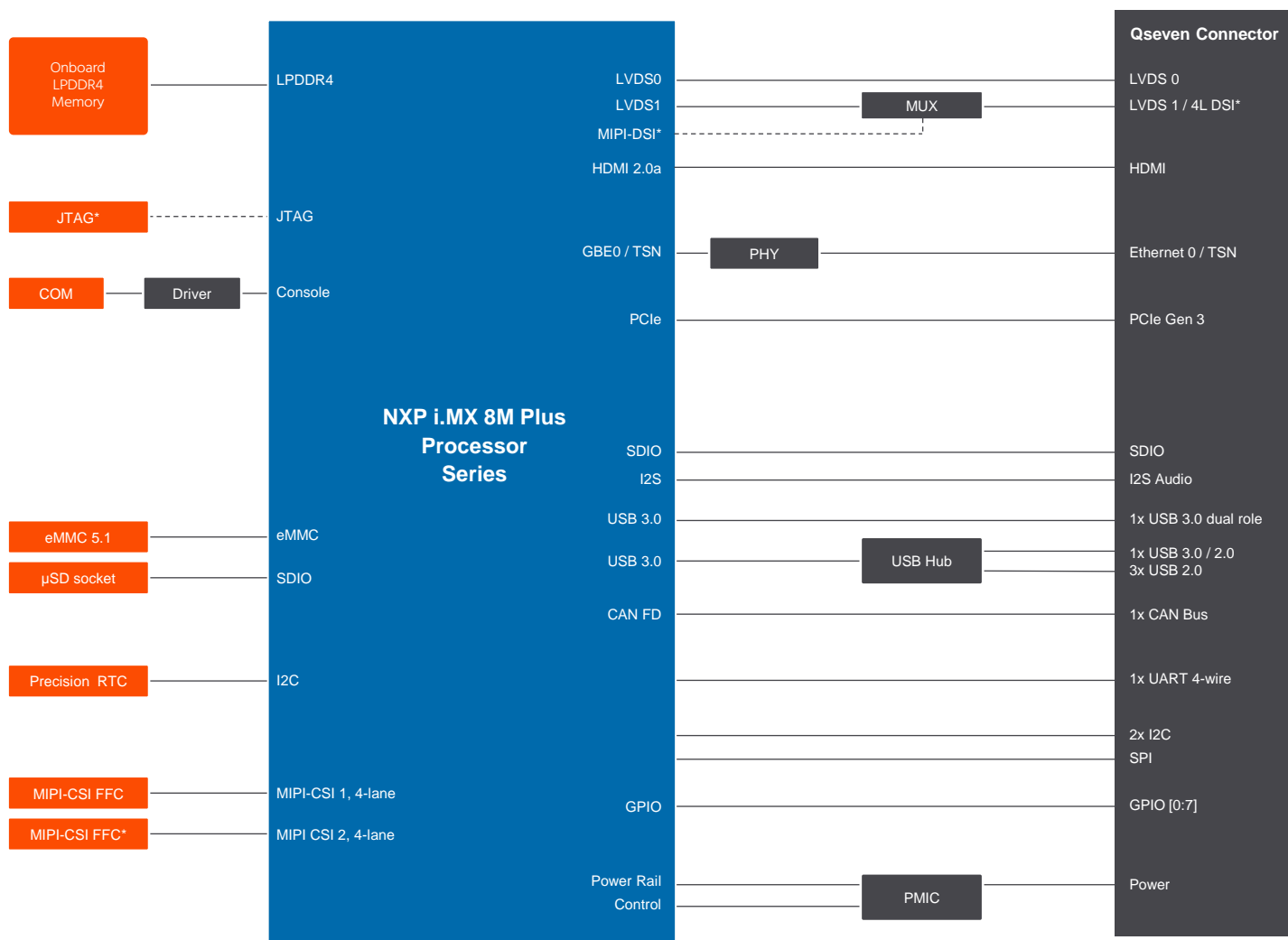


- NXP i.MX 8M Plus 14nm processor series with ARM 4-Core Cortex-A53 / M7 + NPU
- Enhanced AI, Machine Learning and Vision capabilities featuring NPU and integrated camera ISP's
- Ultra low power architecture with 2-5W
- Extended longevity up to 15 years
- Temperature range up to -40°C .. +85°C



<b>Form factor</b>	Qseven Specification 2.1				
<b>CPU SoC</b>	<b>NXP i.MX 8M Plus Processor Cores</b>				
		<b>ARM Cortex-A53</b>	<b>ARM Cortex-M7</b>	<b>NPU</b>	<b>GPU</b>
	i.MX 8M Plus Quad (consumer)	4x @ 1.8 GHz 64bit	1x @ 800MHz	1x up to 2.3 TOPS	GC7000UL/GC520L
	i.MX 8M Plus Quad (industrial)	4x @ 1.6 GHz 64bit	1x @ 800MHz	1x up to 2.3 TOPS	GC7000UL/GC520L
<b>DRAM</b>	Up to 6 GByte onboard LPDDR4 memory   4000 MT/s   inline ECC				
<b>AI &amp; Machine Learning</b>	Neural Processing Unit (NPU) with up to 2.3 TOPS   NXP eIQ ML SW tools and libraries				
<b>Ethernet</b>	1x Gbit Ethernet with IEEE 1588 and TSN Support				
<b>I/O Interfaces</b>	1x dual-role USB 3.0   3x USB 2.0   1x USB 3.0   1x SDIO 3.0   1x onboard µSD card socket   1x PCIe 3.0   2x I <sup>2</sup> C   1x SPI 1x UART with Handshake   1x CAN FD   12x GPIOs				
<b>Mass Storage</b>	eMMC 5.1 up to 128 GByte   SPI NOR Flash up to 64MByte				
<b>Sound</b>	1x I <sup>2</sup> S   HiFi 4 DSP				
<b>Graphics</b>	Integrated in SoC   GC7000UL 3D graphics with 2 high performance vec4 shaders   GC520L 2D graphics VPU up to 1080p60 H.265/H.264 decoding and encoding   OpenGL ES 3.1   Vulkan   OpenCL 1.2 FP   OpenVG 1.1 2 independent displays				
<b>Video Interfaces</b>	1x dual channel 24-bit LVDS   1x HDMI 2.0a   1x MIPI-DSI 4-lane shared with second LVDS channel 2x MIPI-CSI 4-lane onboard connectors   2x integrated Image Signal Processor (ISP) for cameras with up to 12 MP resolution				
<b>Features</b>	Watchdog Timer   Cortex-A53 Console   optional JTAG debug interface   High Precision Real Time Clock				
<b>Security</b>	Cryptographic Acceleration and Assurance Module (CAAM)   Resource Domain Controller   ARM®TrustZone® High Assurance Boot support   SHE, Encryption Engine AES-128, AES-256, 3DES, RC4, RSA4096, TRNG SHA-1, SHA-2, SHA-256, MD-5   RSA-1024, 2048, 3072, 4096 and secure key storage   side channel attack resistance				
<b>Boot Loader</b>	U-Boot boot loader				
<b>Operating Systems</b>	Linux, Yocto Project   Android				
<b>Power Consumption</b>	Typical application 2-5W @ 5V				
<b>Temperature Range</b>	Operating Temperature Range:		0 to +60°C commercial grade -40 to +85°C industrial grade		
	Storage Temperature Range:		-40 to +85°C		
<b>Humidity</b>	Operating: 10 - 90% r. H. non cond.		Storage: 5 - 95% r. H. non cond.		
<b>Size</b>	70mm x 70 mm				

# conga-QMX8-Plus | Block Diagram



\* Assembly Option  
 \*\* Shared with Console

# conga-QMX8-Plus | Order Information

Article	PN	Description
conga-QMX8-Plus/i-QC-NPU-4G eMMC16	061620	Qseven module with low-power 14nm NXP i.MX 8M Plus Quad processor. Features 4x ARM® Cortex®-A53 @ 1.6GHz +1x ARM® Cortex®-M7 + NPU, 4GB onboard LPDDR4 memory and 16GB onboard eMMC. Industrial grade temperature range from -40°C to 85°C.
conga-QMX8-Plus/i-QC-NPU-2G eMMC16	061621	Qseven module with low-power 14nm NXP i.MX 8M Plus Quad processor. Features 4x ARM® Cortex®-A53 @ 1.6GHz +1x ARM® Cortex®-M7 + NPU, 2GB onboard LPDDR4 memory and 16GB onboard eMMC. Industrial grade temperature range from -40°C to 85°C.
QMX8-Plus/HSP-T	061650	Standard heatspreader for Qseven module conga-QMX8-Plus with NXP i.MX 8M Plus ARM processor. All standoffs are 2.5mm thread.
QMX8-Plus/HSP-B	061650	Standard heatspreader for Qseven module conga-QMX8-Plus with NXP i.MX 8M Plus ARM processor. All standoffs are with 2.7mm bore hole.
QMX8-Plus/CSP-T	061650	Passive cooling for Qseven module conga-QMX8-Plus with NXP i.MX 8M Plus ARM processor. All standoffs are 2.5mm thread.
QMX8-Plus/CSP-B	061650	Passive cooling for Qseven module conga-QMX8-Plus with NXP i.MX 8M Plus ARM processor. All standoffs are with 2.7mm bore hole.
conga-QEVAL/Qseven 2.0 ARM	007005	Evaluation carrier board for Qseven ARM modules.
conga-DP/HDMI adapter 4k	500030	conga-DP/HDMI adapter 4k is used for evaluation of the DP/HDMI graphics interface of x86 Qseven and COM Express modules in combination with the congatec evaluation carrier boards conga-QEVAL and conga-TEVAL. It supports full 4k display resolution.
RS232 adapter cable for conga-ARM modules	48000023	RS232 adapter cable for congatec ARM modules console debug application.
Basler dart camera daA3840-30mc	44500041	Basler dart BCON for MIPI camera module daA3840-30mc, 8Mpx, 30fps, 4 CSI2-Lanes, S-Mount.
FFC Basler dart BCON for MIPI, 200mm	10000399	FFC 28 pin cable for Basler BCON dart cameras, 0,5mm pitch. compatible with 28 pin Hirose ZIF connector (PN: FH41-28S-0.5SH(05)
Evetar Lens M118B0418IR F1.8 f4mm 1/1.8" - Lens	10000429	Evetar Lens M118B0418IR F1.8 f4mm 1/1.8" - Lens for Basler dart camera module daA3840-30mc



**Distributore per l'Italia: Contradata Milano S.r.l.**

Via Solferino 12 - 20900 Monza (MB) - Italy  
Tel: (+39) 039-230.14.92 Email: info@contradata.it

© 2021 congatec AG. All rights reserved.

All data is for information purposes only. Although all the information contained within this document is carefully checked, no guarantee of correctness is implied or expressed. Product names, logos, brands, and other trademarks featured or referred are the property of their respective trademark holders. These trademark holders are not affiliated with congatec AG.  
Draft Rev. 0.3, September 2, 2021



[www.contradata.it](http://www.contradata.it)