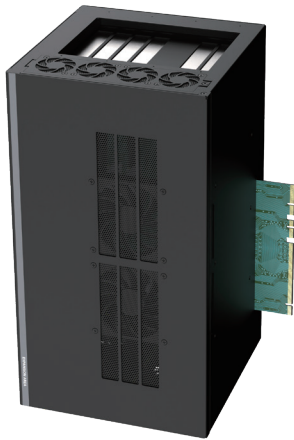
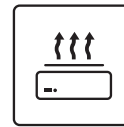
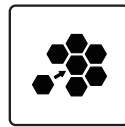


# GEB-3601

GPU Expansion Box with 2 x PCIe x16 (Signal PCIe x8), 1 x PCIe x4 and 1 x PCIe x1 Slots for GP-3000 Series



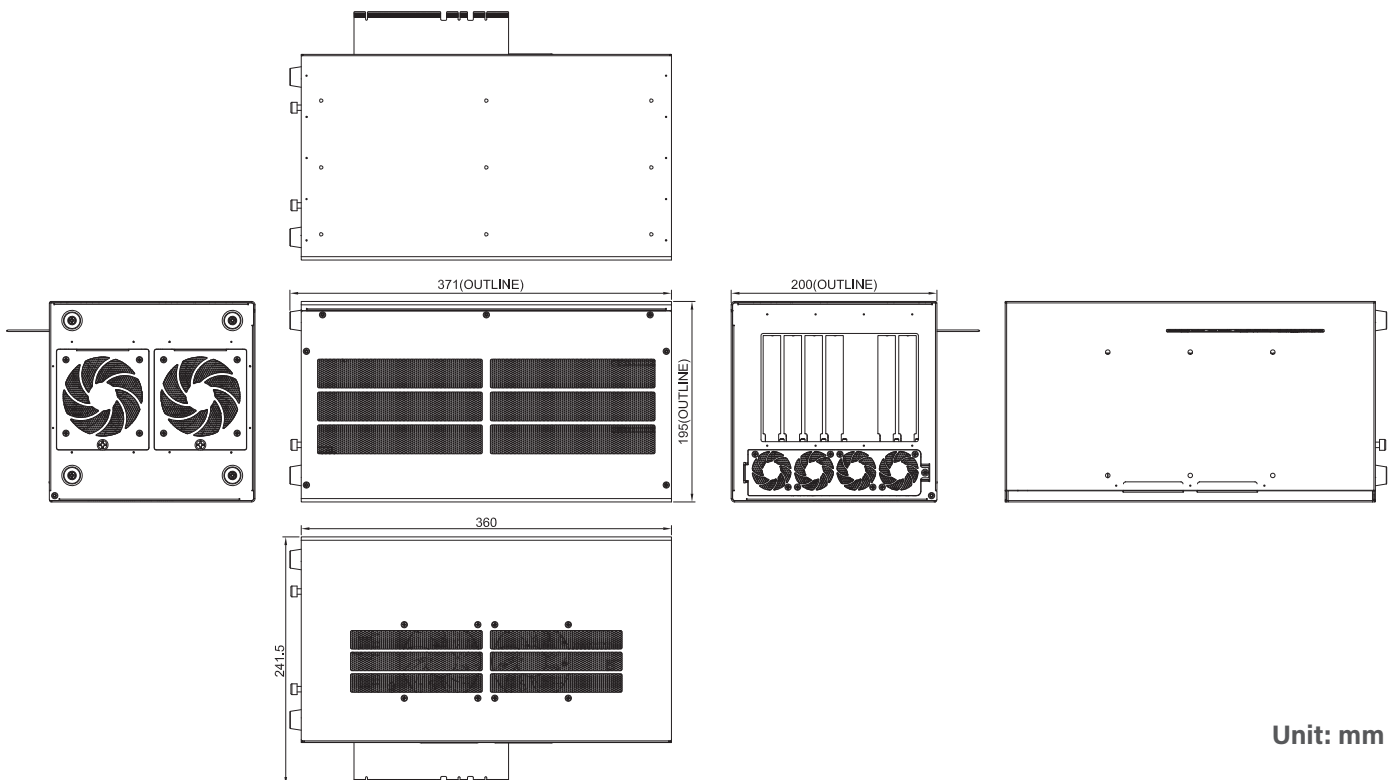
- Supports NVIDIA RTX 30 Series GPU Card
- Supports 2 x PCIe x16 Slots for full-length GPU cards Expansion
- Supports 1 x PCIe x4 Slot and 1 x PCIe x1 slot for Add-on cards
- Intelligent Cooling Design for High Performance GPU Card
- Military Standard Shock & Vibration Proof



## Specifications

Expansion Slot	<ul style="list-style-type: none"> <li>▪ 2 x PCIe x 16 Slot ( PCIe x 8 Signal ) for GPU Card</li> <li>▪ 1 x PCIe x 4 Slot</li> <li>▪ 1 x PCIe x 1 Slot</li> </ul>
GPU Card Dimension	<ul style="list-style-type: none"> <li>▪ Card Length: 328mm</li> <li>▪ Card Height: 64mm ( Standard Triple-Deck )</li> <li>▪ Card Width: 134mm</li> </ul>
Internal USB	1 x USB2.0, Type A
Internal Power Connector	4 x 8-Pin Connector for GPU Card
Total Power Budget	500W
Weight Information	5.2 kg
Dimension ( W x D x H )	200 x 195 x 360 mm
MTBF	1,661,177 hr

## Dimensions



Unit: mm

## Ordering Information

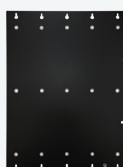
### Available Models

**GEB-3601-R10**



GPU Expansion Box with 2 x PCIe x 16 (Signal PCIe x 8),  
1 x PCIe x 4 and 1 x PCIe x 1 Slots for GP-3000 Series

### Package Checklist



Wall Mount Bracket



4 x 8 Pin to 6+2 Pin GPU Power Cable



2 x Screw Pack



1 x GPU Card Retainer Screw Pack



1 x Rubber Foot Kit



4 x Sponge



**Distributore per l'Italia: Contradata Milano S.r.l.**

Via Solferino 12 - 20900 Monza (MB) - Italy  
Tel: (+39) 039-230.14.92 Email: info@contradata.it

**www.contradata.it**