

JetWave Smart Remote

JSR



- Korenix first Smart phone SW
- Easy to connect to JetWave WIFI series products.
- Support Android smartphone.
- JetWave WIFI AP/CPE visualization.
- Antenna set up assistance.
- AP location evaluation



Overview

The JetWave Smart Remote is an SW that can be downloaded from the Korenix website. By downloading the App, users can easily connect their wireless AP/ client to their phones. The App works as a small management system on your phone that can automatically detect all nearby Korenix AP and client devices. With Korenix JSR, engineers can check all AP / Client connection status or package loss rate with only a few clicks. Moreover, the app also has the antenna assistant function, which allows engineers to adjust the antenna to the best angle effortlessly. With Korenix JSR, the managing process from installing to trouble-shooting can be done simply by mobile.

Specification

Main Program	
Main Screen	The device information includes: Device List Antenna Assistant Device Monitor
Device List	AP/Client Status(Signal strength/MAC address/IP address/Model Name/FW version) Ping Test
Antenna Assistant	Antenna adjustment RSSI range definition change a. GOODL: > -69dBm b. NORMAL: -70dBm ~ -79dBm c. POOR: < -80dBm AP Location Evaluation
Networking Monitor*	AP/Client connection track Disconnect alarm Connection log file history
System Requirement	Android Phone (Android 5.0 +)
Available Model	JetWave 2211C - FW V1.0 above (Client status detection only) JetWave 2212X - FW V1.4 above JetWave 2212S - FW V1.4 above JetWave 2212G - FW V1.4 above JetWave 3220v3 -FW V1.2 above JetWave 2714G - FW V1.0 above JetWave 4221/4211- FW V1.0 above
Note	The latest JSR functions may request the latest Device FW version, the software will be updated on Korenix Web.
Free Download	Please download it on Korenix Web Download page. Free download before end of Y2021. Check with you sales or contact info@contradata.it

Networking Monitor* : Support version : JSR V1.1 above



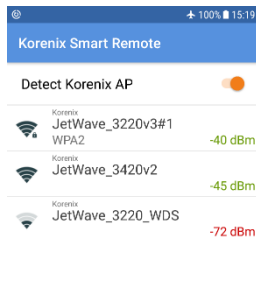
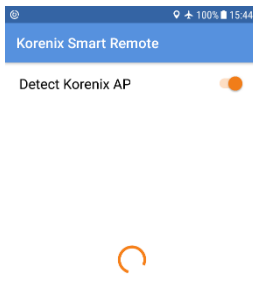


Installation

Step 1

Use Android smartphones to download JSR from the Korenix website.

After downloading and installing, you can find the SW at a smartphone screen.



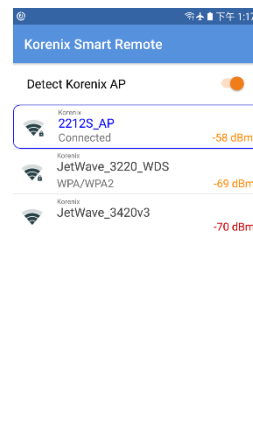
Step 2

Enable JSR scan function.

The system will detect all the JetWave WiFi AP in the local area.

Only Korenix AP will be detected.

AP/Client signal dBm will also be showed.

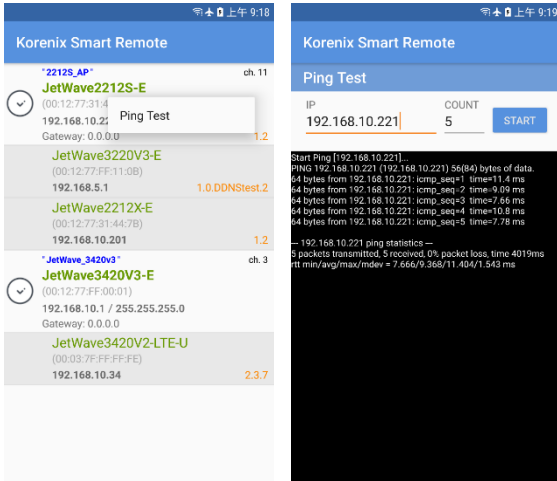


Step 3

Once connected to one of the AP, it will show the product info and function button.



Choose "Devices List". It will show all client devices under each AP.

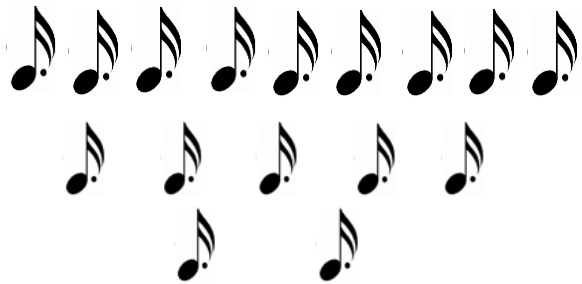


Step 4

Select the client device and do the “Ping Test”. By doing so you can check the AP/client connection status and package loss rate.

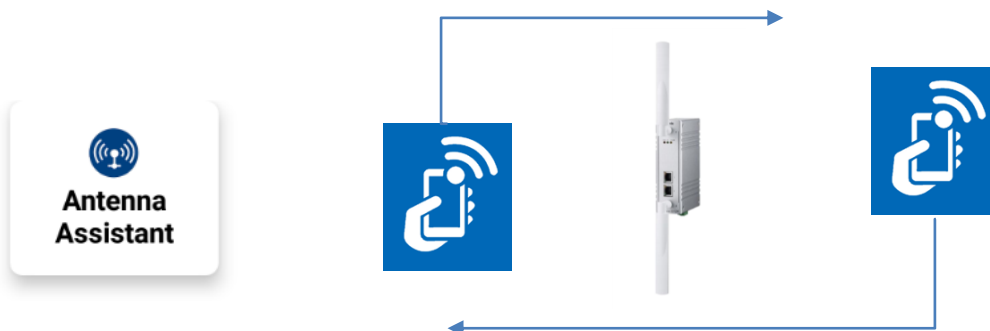
Antenna Assistant

The Antenna Assistant helps engineers to adjust antennas by displaying the signal strength and generating beep sound. With the sound assistant, engineers can adjust the antenna without checking on the computer repeatedly and can simply fix it through listening to the frequency of beeps sound.



AP Location Evaluation

Korenix JSR shows the signal dBm of each AP/ client, which allows engineers to check the best connecting signal on their phone. When installing multiple AP in the field, engineers can only find out the signal strength between two AP devices after installing. If the signal isn't strong enough, the AP device has to be removed and re-installed in other places. The installing process is time-consuming and inefficient. With Korenix JSR, engineers can now walk around by just carrying their phones to find the best spot with the strongest signal.



Distributore Korenix per l'Italia: