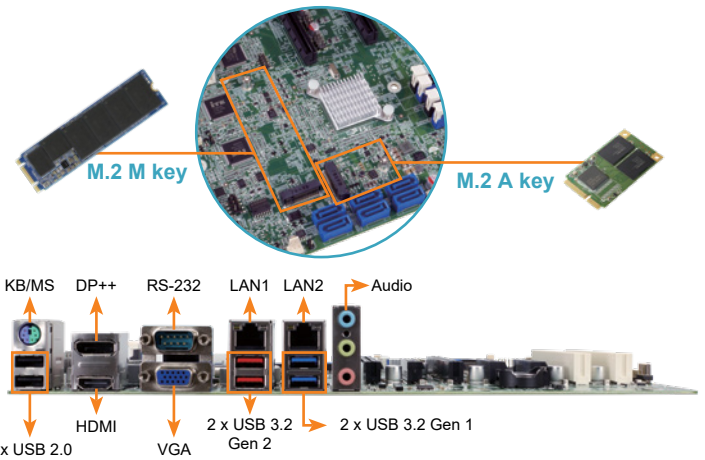
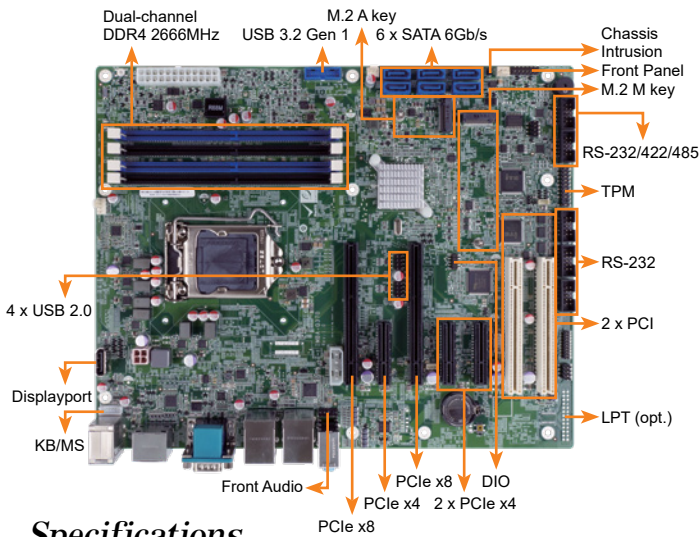


IMBA-Q370

ATX motherboard supports 14nm LGA1151 Intel® 8th/9th Generation Core™ i9/i7/i5/i3, Celeron® and Pentium® processor, DDR4, triple independent displays, dual GbE LAN, M.2, USB 3.2 Gen 2 (10Gb/s), SATA 6Gb/s, HD Audio and RoHS



Specifications

- ◆ CPU
LGA1151 socket supports 8th/9th generation Intel® Core™ i9/i7/i5/i3, Pentium® or Celeron® processor
- ◆ Chipset: Intel® Q370
- ◆ BIOS: AMI UEFI BIOS
- ◆ Memory
Four 288-pin 2666/2400 MHz Dual-Channel DDR4 SDRAM Unbuffered DIMMS supported up to 64GB
- ◆ Graphics Engine
Intel® HD Graphics Gen9 Engines with Low power 16 execution unit, supports DX11.3/12, OpenGL 4.3/4.4/4.5 and OpenCL 1.2/2.0/2.1
- ◆ Display Output
Triple independent display
1 x VGA (up to 1920 x 1080@60Hz)
1 x DP++ (up to 4096 x 2304@60Hz)
1 x HDMI (up to 4096 x 2304@30Hz)
1 x internal Displayport (up to 4096 x 2304@60Hz)
- ◆ Ethernet
LAN1 : Intel® I219LM PCIe controller with AMT 11.0 support
LAN2: Intel® I211AT PCIe controller
- ◆ Super I/O: Embedded Controller
- ◆ External I/O Interface
2 x USB 3.2 Gen 2 (10Gb/s) 1 x RS-232
2 x USB 3.2 Gen 1 (5Gb/s) 1 x PS/2 KB/MS
2 x USB 2.0
- ◆ Internal I/O Interface
1 x 180° Displayport 1 x KB/MS (1x6 pin)
2 x RS-232/422/485 (2x5 pin, P=2.54) 3 x RS-232 (2x5 pin, P=2.54)
2 x USB 3.2 Gen 1 (5Gb/s) (2x10 pin, P=2.0) 4 x USB 2.0 (2x4 pin, P=2.54)
6 x SATA 6Gb/s (RAID 0/1/5/10 supported)
- ◆ SMBus: 1 x SMBus (1x4 pin)
- ◆ I²C: 1 x I²C (1x4 pin)
- ◆ Audio
Realtek ALC662 HD codec
3 x Audio Jack (Line-in, Line-out, Mic-in)
1 x Analog audio (2x5 pin)
- ◆ Front Panel
1 x Front Panel (2 x 7 pin, Power LED, HDD LED, Speaker, Power Button, Reset Button)
LAN LED: 2 x LAN LED (1x2 pin)
- ◆ Expansion
2 x PCIe x8 1 x M.2 A key (2230, PCIe x1 & USB 2.0)
3 x PCIe x4 1 x M.2 M Key (2280, PCIe x2 only)
2 x PCI
- ◆ Digital I/O: 1 x 8-bit digital I/O (2x5 pin)
- ◆ TPM: 1 x TPM (2x10 pin)
- ◆ FAN Connector
1 x CPU fan connector (1x4 pin)
2 x System fan connector (1x3 pin)
- ◆ Chassis Open: 1 x Chassis intrusion (1x2 pin)
- ◆ Power supply
ATX/AT power supply
Support AT/ATX mode
ErP/EuP Compliant
- ◆ Watchdog Timer: Software programmable support 1~255 sec. system reset
- ◆ Power Consumption
3.3V@1.65A, 5V@3.4A, 12V@8.58A, 5VSV@3.4A (Intel® Core™ i7-8700K up to 4.60 GHz CPU with 32GB 2600MHz DDR4 memory)
- ◆ Operating Temperature: -20°C ~ 60°C
- ◆ Storage Temperature: -30°C ~ 70°C
- ◆ Operating Humidity: 5% ~ 95%, non-condensing
- ◆ Dimensions: 244mm x 305mm
- ◆ Weight: GW:1200g / NW:700g
- ◆ CE/FCC compliant



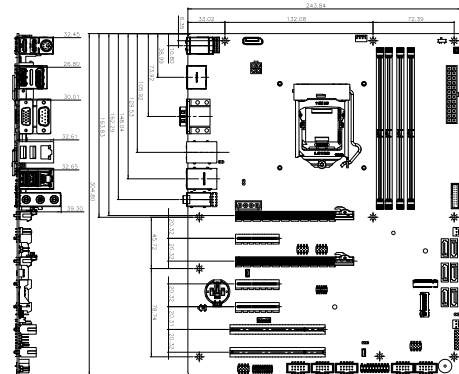
Features

- LGA1151 Intel® 8th/9th Generation Core™ i9/i7/i5/i3, Celeron® and Pentium® processor
- Dual-channel DDR4 2666MHz
- Support VGA, HDMI & DP++
- Support M.2 A key for WLAN expansion, M key for storage

Packing List

1 x IMBA-Q370 single board computer	2 x SATA cable
1 x I/O shielding	1 x QIG

Dimensions (Unit: mm)



Ordering Information

Part No.	Description
IMBA-Q370-R10	ATX motherboard supports 14nm LGA1151 Intel® 8th/9th Generation Core™ i9/i7/i5/i3, Celeron® and Pentium® processor, DDR4, triple independent displays, dual GbE LAN, M.2, USB 3.2, SATA 6Gb/s, HD Audio and RoHS
19800-000075-RS	PS/2 KB/MS cable with bracket, 220mm, P=2.0
19800-003100-100-RS	Dual port USB cable with bracket, 30mm, P=2.54
19800-010500-200-RS	USB 3.2 Gen 1 (5Gb/s) cable 457mm with bracket
32102-000100-200-RS	SATA power cable, MOLEX 5264-4P to SATA15P
32205-000702-100-RS	RS-232 cable, 230mm, P=2.54
CF-115XA-R10	High performance LGA115X cooler kit ,1U chassis compatible, 73W
CF-115XC-R10	LGA1155/LGA1156 cooler kit, 1U chassis compatible, 45W
CF-115XD-R10	LGA1155/LGA1156 cooler kit, 1U chassis compatible, 65W
CF-115XE-R10	High-performance LGA1155/1156 cooler kit, 95W
TB3-40GDP-R10	PCI Express Thunderbolt expansion card with Intel® DSL6540, 2 port thunderbolt 3 port (USB Type-C), RoHS
TPM-IN02-R20	20-pin Infineon TPM 2.0 module, software management tool, firmware v5.5