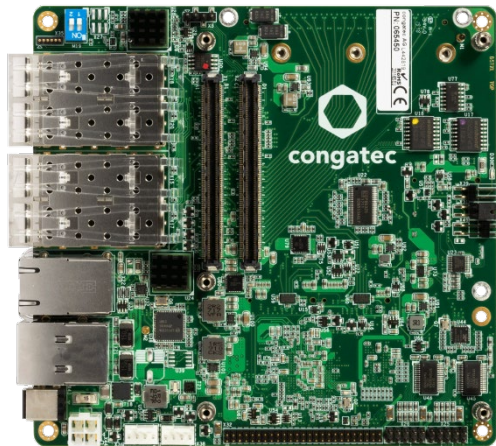


COM EXPRESS TYPE 7 CARRIER BOARD

conga-STX7/carrier

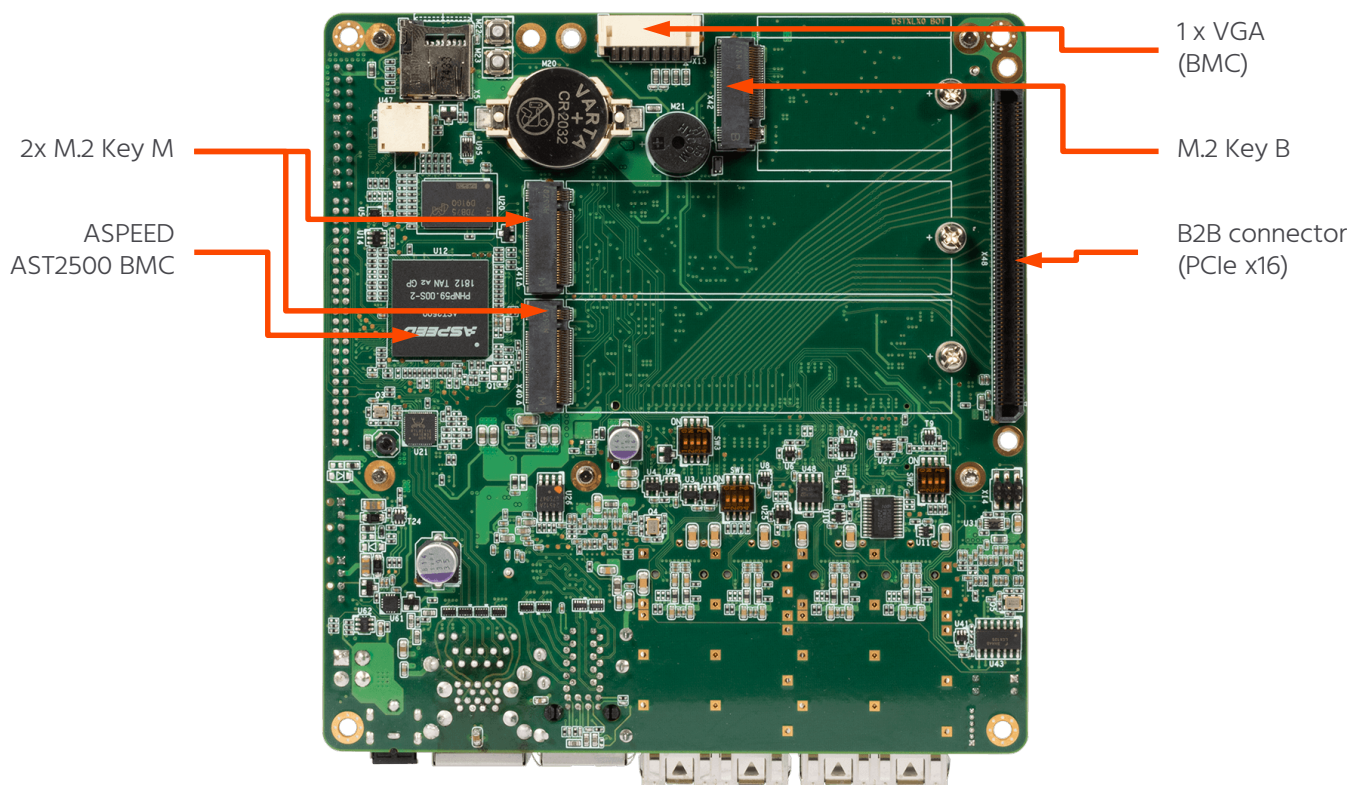
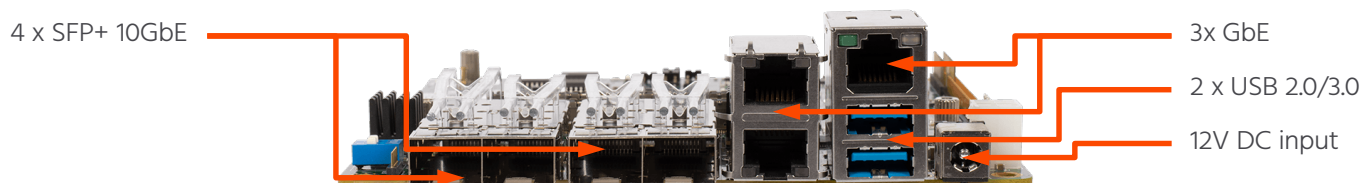
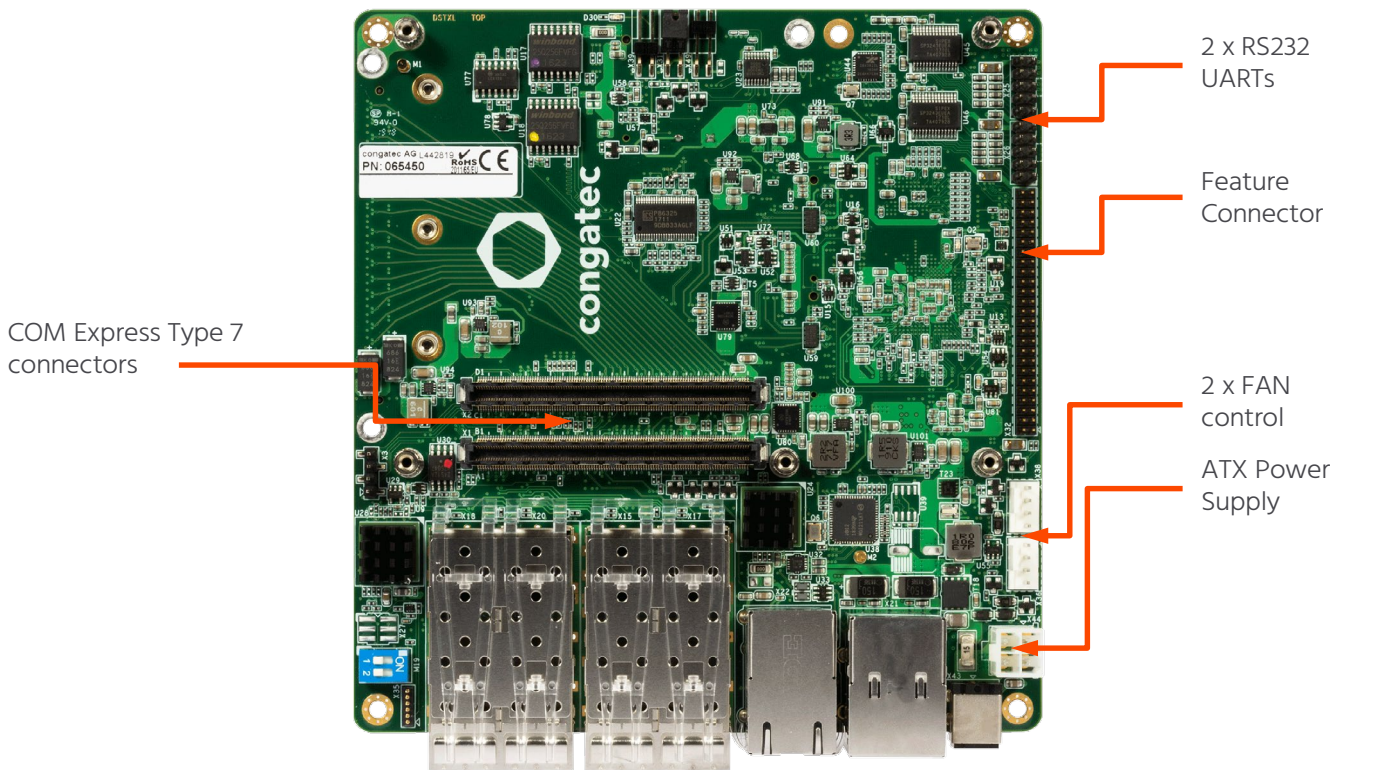


- Intel® 5x5 mini-STX form factor (5.5" x 5.8")
- 4 x 10 GbE LAN (SFP+ modules)
- 3 x 1 GbE LAN
- 3 x M.2 sockets (2x M-Key 2280, 1x B-Key 3042)
- Onboard BMC ASPEED AST2500
- General purpose B2B connector for add-on cards (PCIe x16)

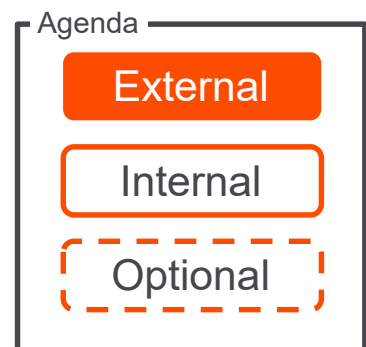
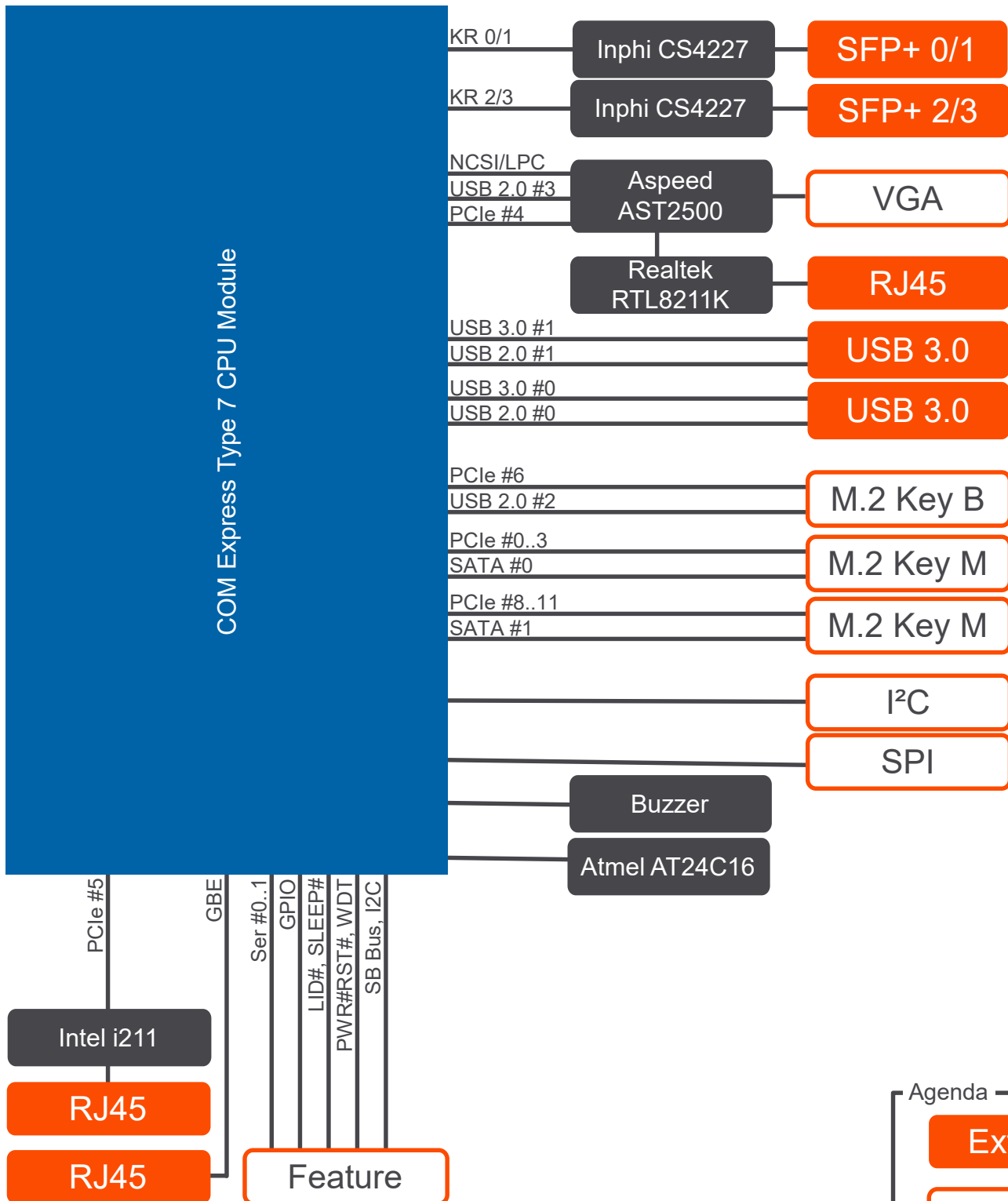
COM  **Express®**

Formfactor	Intel® 5x5, mini-STX form factor (5.5" x 5.8"; 140 mm x 147 mm), COM Express Type 7 Connector (Basic)	
Ethernet	4 x 10 GbE KR MAC Interface from COMe Type 7 module to 2 dual PHY Connector SFP+ Ports. 2 x Integrated Inphi CS4227 10GbE KR PHY's on the carrier. SFP+ ports are configurable by external cable for copper or fiber operating mode 3 x 1 GbE (1 x 1 GbE from COM Express Type 7 module; 1 x 1 GbE on carrier for Networking; 1 x 1 GbE for remote control (BMC))	
Internal connectors	3 x M.2 socket (2x 2280 Key M, 1x 3042 Key B) 2 x RS232 UARTs 1 x Feature connector 1 x General purpose Board 2 Board connector (PCIe x16) 2 x FAN control 1 x VGA	
External connectors	4 x SFP+ 10GbE connector 3 x 1 GbE 2 x USB 2.0/3.0 host ports	
Buttons	Power button Reset button	
BMC	ASPEED AST2500 or ASPEED AST2510	
Power Input	12V DC input ATX Power Supply	
Temperature	Industrial: Operating: -40 to +85°C Storage: -40 to +85°C Commercial: Operating: 0 to +60°C Storage: -40 to +85°C	
Humidity	Operating: 10 - 90% r. H. non cond.	Storage: 5 - 95% r. H. non cond.
Size	140 mm x 147 mm (5.5" x 5.8")	

conga-STX7/carrier | Block diagram



conga-STX7/carrier | Block diagram



conga-STX7/carrier | Order Information

Article	PN	Description
conga-STX7/carrier	065450	Standard Mini-STX carrier board for COM Express Type 7 Modules with basic form factor. The carrier features an Aspeed AST2500 Board Management Controller (BMC).



Distributore Italia: Contradata Milano S.r.l.

Via Solferino 12 - 20900 Monza (MB) - Italy
Tel: (+39) 039-230.14.92 Email: info@contradata.it

www.contradata.it

© 2019 congatec AG. All rights reserved.

All data is for information purposes only. Although all the information contained within this document is carefully checked, no guarantee of correctness is implied or expressed. Product names, logos, brands, and other trademarks featured or referred are the property of their respective trademark holders. These trademark holders are not affiliated with congatec AG.
Rev. Oct 22, 2019 MR