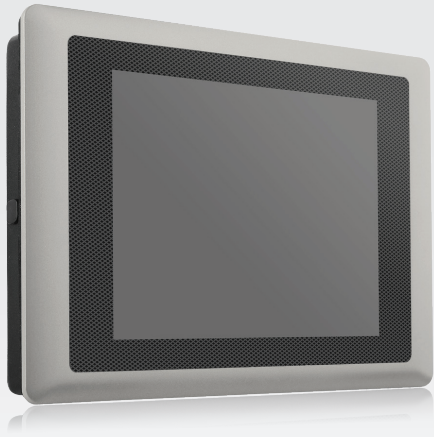


# CV-108/M1001

8.4" TFT SVGA 4:3 Monitor with Touch (Projected Capacitive / Resistive 5-wire), 1x USB, 1x COM, 1x VGA, 1x DVI-D and 1x DisplayPort



## Key Features

- 8.4" TFT SVGA 4:3 LCD with Resistive 5-wire Touch / Projected Capacitive Touch
- Designed with Aluminum Die-Casting Front Frame
- 1x USB, 1x COM, 1x VGA, 1x DVI-D, 1x DisplayPort, 1x Audio
- IP 65 Compliant Front Panel
- Supports Panel / VESA / Rack Mounting
- Convertible Display System (CDS) Supported
- Built-in Two 5W Internal Speakers

## »» Overview

The 8.4" touch monitor with resistive 5-wire / projected capacitive touch screen offers resolution up to 800x600 (SVGA) and 400 nits brightness. CV-108/M1001 features flat surface and IP65 dust/waterproof front panel. In addition, designed with aluminum die-cast front frame, it is rugged and reliable for industrial environment. CV-108/M1001 supports Convertible Display System (CDS) which allows to configure, upgrade and maintain your touch monitor easily.

CV-108/M1001 supports both digital and analog signal input via three types of display interface: VGA, DVI-D and Display-Port. Touch screen can be connected with USB or COM port. It has OSD function for adjusting the viewing options of display. With support to wide range power input from 9~48VDC, CV-108/M1001 is designed as an ideal solution for industrial application.

## »» Specifications

### Display

- LCD Size: 8.4" (4:3)
- Max. Resolution: 800 x 600
- Brightness (cd/m<sup>2</sup>): 400
- Contrast Ratio: 600 : 1
- LCD Color: 262K
- Pixel Pitch (mm): 0.213 (H) x 0.213 (V)
- Viewing Angle (H-V): 150 / 130
- Backlight MTBF: 30000 hrs (LED Backlight)

### Touch

- Resistive 5-wire Touch for CV-108R/M1001 Only
- Projected Capacitive Touch for CV-108C/M1001 Only

### I/O Ports

- 1x VGA
  - 1x DVI-D
  - 1x DisplayPort
  - 1x Audio Input
  - 1x USB 2.0
  - 1x COM Port (Resistive Touch Only)
- (USB & COM Port are reserved for the connection to enable touch usage only)

### Other Features

- Audio: AMP 5W + 5W (Internal Speaker)
- OSD Function: LCD On/Off, Auto, Menu, Up and Down
- Multi-language OSD Function

**Power**

- 1x 3-pin Terminal Block Connector with Power Input 9~48VDC
- 1x Optional AC/DC 12V/5A, 60W Power Adapter

**Environment**

- Operating Temperature: Ambient with air flow:  
CV-108R/M1001: -5°C to 60°C  
CV-108C/M1001: -5°C to 60°C  
(with Industrial Grade Peripherals)
- Storage Temperature:  
CV-108R/M1001: -20°C to 75°C  
CV-108C/M1001: -20°C to 70°C
- Relative humidity:  
CV-108R/M1001: 80% RH @ 60°C (non-condensing)  
CV-108C/M1001: 85% RH @ 60°C (non-condensing)
- IP Level: IP 65 Compliant Front Panel

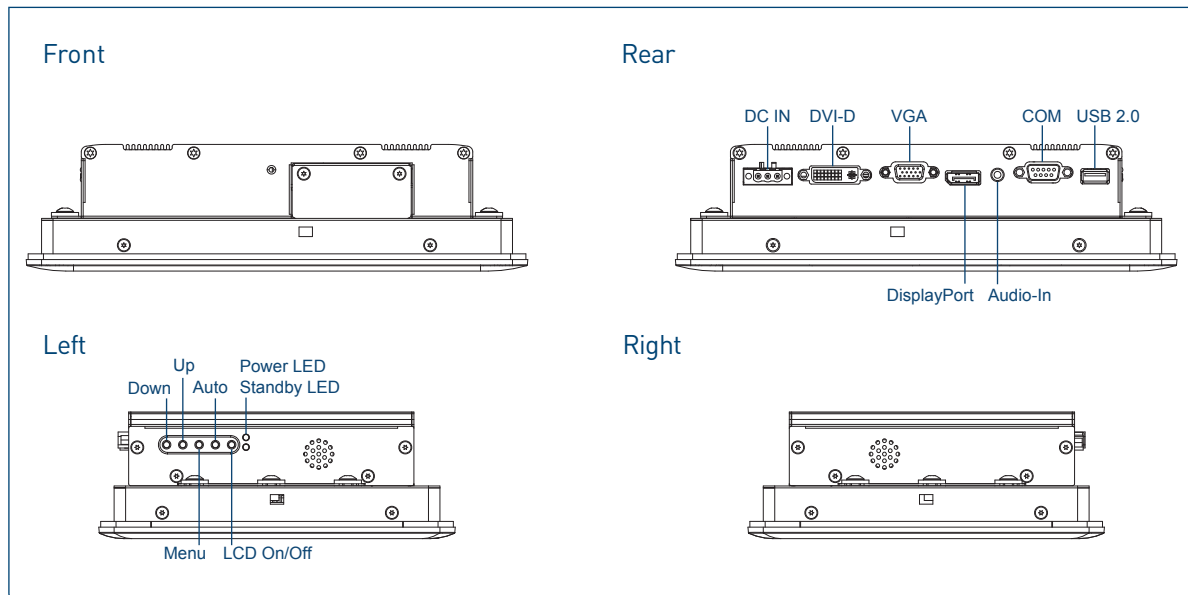
**Physical**

- Dimension (WxDxH, mm): 262 x 186 x 66 mm
- Weight:  
CV-108R/M1001: 2.74 kg  
CV-108C/M1001: 2.70 kg
- Construction Front Panel: Die-Casting Flat Surface
- Mounting: Panel / VESA / \*Rack Mounting (\*with optional mounting kit)

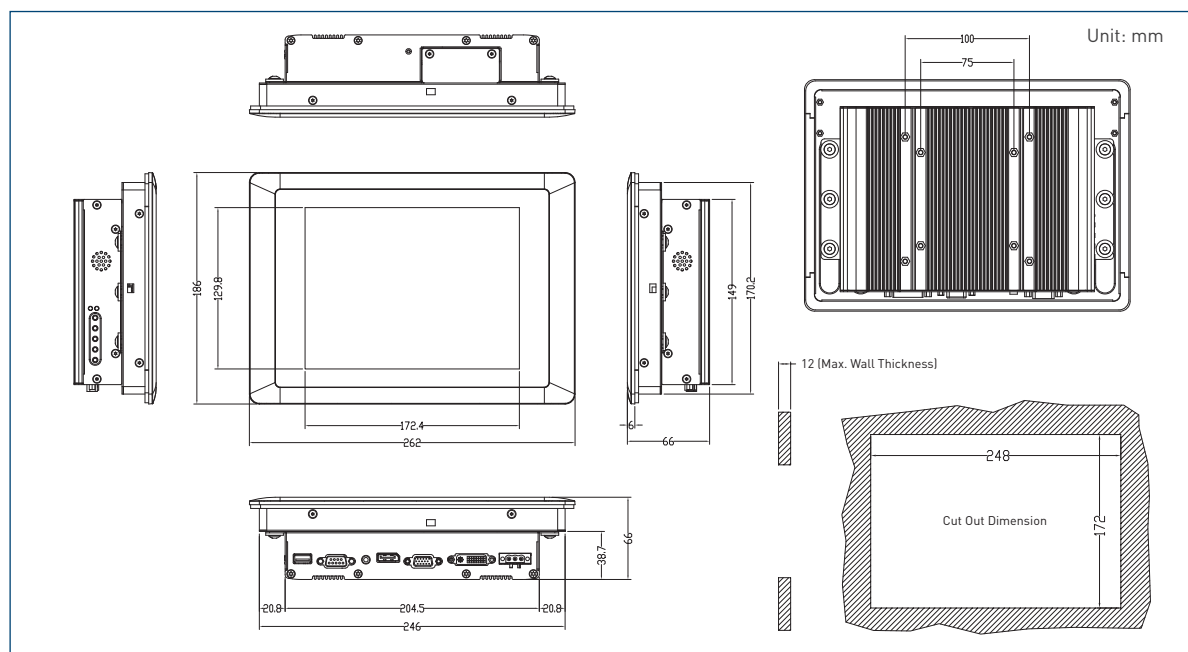
**Certification**

- CE
- FCC Class A

»» External I/O Mechanical Layout



»» Dimensions



## Ordering Information

### Available Models

Model No.	Product Description
<b>CV-108R/M1001</b>	8.4" TFT SVGA 4:3 Monitor with <b>Resistive 5-wire Touch</b> , 1x USB, 1x COM, 1x VGA, 1x DVI-D and 1x DisplayPort
<b>CV-108C/M1001</b>	8.4" TFT SVGA 4:3 Monitor with <b>Projected Capacitive Touch</b> , 1x USB, 1x COM, 1x VGA, 1x DVI-D and 1x DisplayPort

### Package Checklist

#### CV-108/M1001

- CV-108/M1001 Touch Monitor x 1
- Panel Mounting Kit x 4
- Utility DVD Driver x 1
- Power Terminal Block Connector (Female) x 1
- USB Cable x 1
- VGA Cable x 1
- Screw Pack x 1

### Optional Accessories

Model No.	Description
GST60A12-CIN1	Adapter AC/DC 12V 5A 60W, GST60A12-CIN1, wide temp[-30°C ~ +70°C]
DVI-D Cable	DVI-D male to DVI-D male Cable 1.8M
SL2-SL3	US 2 heads power cord, US B type to IEC C13, SVT 18AWG/3C Black 1.8M SL-2+SL-3
SL6-SL3	EU 2 heads power cord, EU G type to IEC C13, H05VV-F 0.75mm2/3G Black 1.8M SL-6+SL-3
QP026-SL3	UK 2 heads power cord, UK I type to IEC C13, H05VV-F 0.75mm2/3G Black 1.8M QP026+SL-3
URM01	Universal 19" Rack Mount Kit for Industrial Panel PC & Industrial Monitor