


## JetWave 2212X/S

Industrial 802.11 a/b/g/n 2.4G/5G 2T2R MIMO Wireless AP  
Quick Installation Guide V1.0

### Overview

JetWave 2212X/S is a wireless access point. They equip with 2-port Fast Ethernet and IEEE 802.11a/b/g/n 2.4G and 5G wireless radio. With the JetWave 2212X/S wireless access point, a network designer will easily achieve the integration of wired and wireless networks. JetWave2212S equips with 2 RS232/422/485 which could support versatile serial application, such as TCP Server, TCP Client and UDP Listening. The serial data can be transmit through the wireless interface.

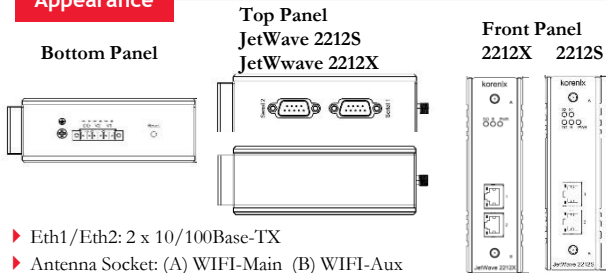
### Safety Instruction

 Warning! Read the user manual before connecting the system to the power source.

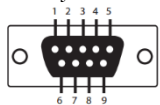
### Radio Equipment Directive 2014/53/EU Declaration

The product may be operated in all European Union countries. While you see the CE Marking printed on our product, it indicates the product complies with the requirement of the Radio Equipment Directive 2014/53/EU. We provides formal declaration of RED for wireless product, different product may comfort to different standards of Health & Safety, EMC, Radio and other specific standard. You can download the formal document of the product in our website or apply from our Sales/Technical people.

### Appearance



- ▶ Eth1/Eth2: 2 x 10/100Base-TX
- ▶ Antenna Socket: (A) WIFI-Main (B) WIFI-Aux
- ▶ Reset: Press for 7 seconds to restore default setting
- ▶ Serial: Connect the serial device to the unit male DB9 port by the pin assignment table. (Jetwave2212S)



Pin #	RS232	RS-422/ RS485(4 wire)	RS485(2 wire)
1	DCD	TX-	DATA-
2	RXD	TX+	DATA+
3	TXD	RX-	
4	DTR	RX+	
5	GND	GND	GND
6	DSR		
7	RTS		
8	CTS		
9	RI		

### Package Check List

- ▶ JetWave 2212X or 2212 S Product Unit
- ▶ 2x WIFI Antenna
- ▶ 6-pin terminal block
- ▶ Quick Installation Guide
- ▶ Din-Rail Kit

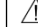
### Installation

#### Power Input

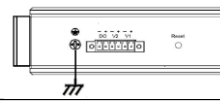
The device supports dual DC power input. The typical power input is 24V (Range from 9~26VDC).

#### Power the unit


- ▶ Connect the power, the unit will power on .
- ▶ When the unit is ready, the PWR LED turns Green.

 **Notice**

**Mounting The Unit/Antenna and well Ground is Must:** JetWave 2212X/S supports Din-Rail mounting, the mounting kit is pre-installed. You can mount the device to the DIN Rail directly. Connect the Ethernet cable, Antenna and Ground before power on system. Ground is important and **MUST** in field.



Grounding

 **Warning**

- The DC connecting line must conform to the safety regulations of the country in which the device is installed.
- Properly connect the device to a protective conductor.

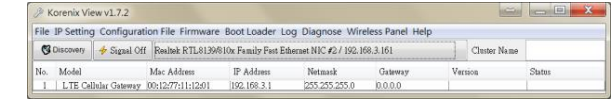
### Korenix View Utility

The Korenix View Utility provides you a convenient way to scan the network and configure the connected Korenix device.

Step 1: Open the Korenix View Utility. (V1.7 or later version)

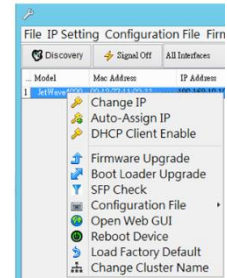
Step 2: Select the correct NIC (Network Interface Card) from the NIC list

Step 3: Click “Discovery”, and then the Nodes and its IP address can be found and listed in the Node list.



Step 4: After you scan the network, select the device and click “Open Web GUI” to access the web management interface.

You can modify the IP address/Netmask directly on the selected entry and then click “Change IP” to change IP settings.



### Web GUI

The JetWave 2212X/S provides web management interface for basic and advanced settings. Before configuration, please make sure your system meets the following requirements:

- ▶ A computer coupled with 10/100 Base-T(X) adapter.
- ▶ Configure the computer with a static IP address of 192.168.10.X (X cannot be 0, 1, or 255).
- ▶ Connect JetWave 2212X/S to Eth 1/ Eth 2 by standard Ethernet cable. The Eth 1 /Eth 2 LED turns Green means the link is activated.
- ▶ The Ethernet default IP is “192.168.10.1”
- ▶ Open web browser (Ex: IE, Chrome, Firefox...) and enter the IP address of the product. You will see the System Login page.
- ▶ Check User Manual for advanced settings.
- ▶ Please access to the web interface via <https://>, if the web browser is not access, please check your firewall or contact your support window for further help.
- ▶ Note: If you forget the IP Address, you can use Korenix View Utility to search the device’s IP address, the program can be found at Download page of the Korenix website.

### Support

#### 5 Years Warranty

Each of Korenix’s product line is designed, produced, and tested with high industrial standard. Korenix warrants that the Product(s) shall be free from defects in materials and workmanship for a period of five (5) years from the date of delivery provided that the Product was properly installed and used. This warranty is voided if defects, malfunctions or failures of the warranted Product are caused by damage resulting from force measure (such as floods, fire, etc.), other external forces such as power disturbances, over spec power input, or incorrect cabling; or the warranted product is misused, abused, or operated, altered and repaired in an unauthorized or improper way.

**Attention! To avoid system damage caused by sparks, please DO NOT plug in power connector when power is on.**

The product is in compliance with Directive 2002/95/EC and 2011/65/EU of the European Parliament and of the Council of 27 January 2003 on the restriction of the use of certain hazardous substances in electrical and electronics equipment (RoHS Directives & RoHS 2.0)

#### Korenix Customer Service

KoreCARE is Korenix Technology’s global service center, where our professional staff are ready to solve your problems at any time Korenix global service center’s e-mail is [KoreCARE@korenix.com](mailto:KoreCARE@korenix.com). For more information and documents download please visit our website: <http://www.korenix.com/downloads.htm>

## 概述

JetWave 2212X/S 具备2个千兆以太网电口，同时也支持IEEE 802.11a/b/g/n 2.4G及5G无线射频技术。Jetwave 2212S 具备2个RS-232/422/485串口串口介面可提供多功能之串行应用，例如TCP Server、TCP Client及UDP Listening；串口传送的资料，可以透过无线网络传出。

### 安全须知

**警告！**在将系统连接到电源之前，请仔细阅读使用手册。

### RED指令2014/53/EU宣告

本品可以在所有欧洲联盟成员国进行。当您看到CE标志印在我们的产品，表示产品符合RED (2014/53/ EU)指令的要求。

我们针对无线类产品，提供正式版R&TTE宣告文件，不同的机种可能会遵照不同的标准。您可以从我们的网站下载该产品的正式文件或发送请求给我们的销售/技术人员。

## 安装

### Power Input

这台设备支援双直流电源，标准电压为直流24V (直流电压范围为9~26V)。

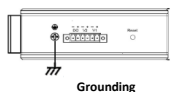
### 设备上电

- ▶ 连接电源后，设备将开机。
- ▶ 当设备启动完成后，电源指示灯会变成绿色。

### 注意

#### 安裝單體天線及可靠接地是必需的

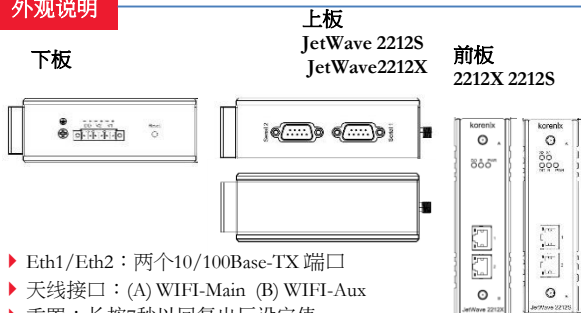
确保安装设备的可靠接地。除了与支路的直接连接支持Din導軌安裝，安裝套件已預先安裝，您可以直接將設備安裝到DIN導軌上。在系統通電之前，需先連接以太網電纜，和接地



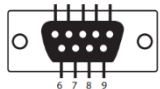
### 警告

- ▶ DC连接线必须符合设备安装地的安全规范。
- ▶ 将设备与安全引线正确相连。

## 外观说明



- ▶ Eth1/Eth2：两个10/100Base-TX 端口
- ▶ 天线接口：(A) WIFI-Main (B) WIFI-Aux
- ▶ 重置：长按7秒以回复出厂设定值
- ▶ 串口：依据RS-232/422/485针脚排序表，将串口设备连接到 JetWave 2212S DB9公串口



Pin #	RS232	RS422/RS485(4 wire)	RS485(2 wire)
1	DCD	TX-	DATA-
2	RXD	TX+	DATA+
3	TXD	RX-	
4	DTR	RX+	
5	GND	GND	GND
6	DSR		
7	RTS		
8	CTS		
9	RI		

### 产品清单

- ▶ JetWave 2212X 或 JetWave 2212S无线访问接入点
- ▶ 快速安装手册
- ▶ 两支 WIFI天线
- ▶ Din-Rail Kit
- ▶ 6-pin电源输入接头

## Web 软件接口

JetWave 2212X/S 提供了网页接口，可管理基本配置与进阶配置。开始配置前，请先确认您的系统满足以下需求：

- ▶ 一台具有10/100 Base-T(X) 网络接口的计算机。
- ▶ 设定一组静态IP地址 192.168.10.X (X不可为0、1或255) 到这台计算机。
- ▶ 使用标准的以太网双绞线连接JetWave 2212X/S 的网络接口进行设定。当连接完成后，网络指示灯变成绿色。
- ▶ JetWave2212X/S 的默认LAN IP 地址为“192.168.10.1”。
- ▶ 打开网页浏览器(如: IE、Chrome、Firefox...)并输入IP地址(预设：192.168.10.1)，您将会开启系统登入画面。
- ▶ 如需进阶设定请参考使用手册。
- ▶ 请透过“https://”登入网页接口，如果网页浏览器无法存取，请检查计算机的防火墙或连系您的技术支持窗口提供更进一步的协助。
- ▶ 备注：若您不清楚设备的IP地址，您可以使用Korenix View Utility来搜寻设备的IP地址，您可以在 Korenix 网页的Download(下载)页面下载。

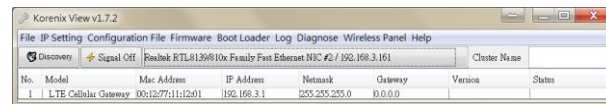
## Korenix View Utility 软件

Korenix View Utility 软件为用户提供一种便捷的方式用于检索网络设备，并可对Korenix 设备进行相关配置

Step 1: 开启Korenix View Utility (V1.7 或更新版本)

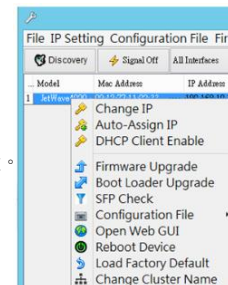
Step 2: 在NIC 清单中选择正确的NIC(网卡接口)

Step 3: 点击”Discovery”，列表中会显示网络节点及其IP地址



Step 4: 检索到所有网络设备以后，选择某台设备开单击”Open Web GUI” 可通过Web 登录管理界面。您也可以通过点击”Change IP” 直接修改设备的IP地址和子网掩码及其IP地址

备注: 请查阅用户手册了解更多软件设置。



## 技术支持

### 5年质保

每个Korenix 的产品，在设计，生产和测试过程都遵循高的工业标准。Korenix 保证其产品从交货起五年内无材料和工艺缺陷，但必须确保产品被正确地安装和使用。质保产品由下情况造成的缺陷，失效或故障不在质保范围：

由强制实施造成的（如洪水，火灾等），其它外部力量，如电源干扰，过规格电源输入，或者接线错误，或者产品被误用，滥用，或者由未授权或不当的方式运行，改造和维修。

**注意！**为了避免火花损坏系统，请不要在带电的情况下插入电源接头。我们的产品符合欧洲2002/95/EC，2011/65/EU标准和理事会在2003年1月21日关于限制电气和电子设备使用某些有害物质条例 (RoHS 条例 & RoHS 2.0) /。

### Korenix售后服务

KoreCARE 是Korenix科技全球服务中心。我们专业的技术人员随时准备解答您的疑问。Korenix全球服务中心 EMAIL: KoreCARE@korenix.com 业务服务: sales@korenix.com.cn 官网: www.korenix.com.cn

**Korenix Technology Co., Ltd.**  
(A Beijer Electronics Group Company)

Tel: +886-2-89111000  
Fax: +886-2-29123328  
Business service: sales@korenix.com  
Customer service: koreCARE@korenix.com  
www.korenix.com  
CPQ000W2212001

**Patent No. (Taiwan):**  
Granted Invention: I 313547  
Granted Invention: I 321415  
Granted Invention: I 344766  
Granted Invention: I 346480  
Granted Invention: I 356616  
Granted Invention: I 364684  
Granted Invention: I 376118  
Granted Invention: I 393317  
Granted Invention: I 398066  
Granted Invention: I 398125  
Granted Invention: I 459757  
Utility Model: M 339841  
Utility Model: M 339840