



N0Q1

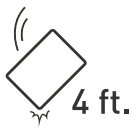
Rugged Tablet



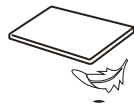
Product Feature



Sealing



Drop Test



Slim & Light



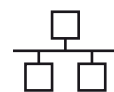
Long battery life



Anti bacteria



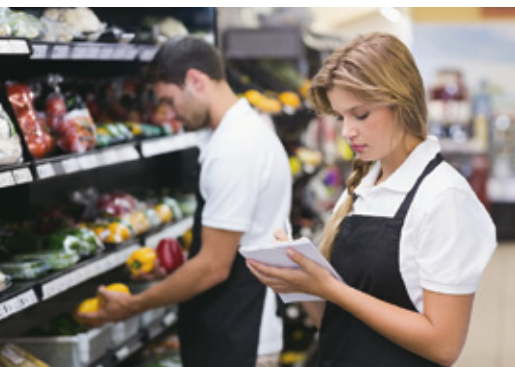
Smart Card reader



RJ45



Support 3G/4G



Accessory (Option)



Docking



Smart Card Reader



RJ45



VESA Breaket



Hand Strap



Shoulder Strap

Specifications

Physical and Enviornment Characteristics

Dimension	186.5x 274x 13.5mm
Weight	760g
Display	10 inch, 16:10 ratio
Sealing	IP54
Drop/Shock	MIL-STD-810G 4-foot drop
Battery life	8.7 hours (follow JEITA v2.0)
Operating Temp	0~40 degree
Storage Temp	-20~60 degree

Performance Characteristics

CPU	Intel Braswell Refresh N3010 TDP: 4W
OS	Windows 8.1 Pro / Windows 10 IoT Enterprise
System Memory	Default DDR3L 2GB.Max 8GB
Storage	Default 32GB.Max 128GB
Display	1280x800 300nits(Min) 350nits(Typical) Projected capacitive Touch Screen. Multi touch 10 points
Button	Power button Windows hotkey Screen Rotate button (Gyro)
I/O ports	USB x2 (Ver.3.0) Headphone out x1 (headphone/ microphone combo jack, 3.5Ø, iPhone Type) Power jack x 1 19V Mirco SD slot x1, SDXC type, (SD 4.0) Pogo pin: x1, female, U2, for docking. x1, female, U2, for extra device
Power	Adaptor:19V, 40W
Battery	Battery1 Li-Polymer, 38W/h, pack swappable, PSE logo Battery Life Over: 8.7 hrs (follow JEITA v2.0) RTC Battery: 1yrs, (rechargeable)
Audio	1Wx2, Stereo type
Camera	2M Pixel front camera 5M Pixel rear camera +Auto Focus (Optional)
Sensors	Light Sensor, E-Compass Sensor, G-Sensor, Gyro Sensor
Security	Kensington x1 TPM 2.0

Wireless & GPS Network Characteristics

Wireless	802.11 ac/a/b/g/n
Bluetooth	Combo with WLAN. (Support Bluetooth 4.1/4.2, BT SIG)
GPS	NA
3G/4G Optional	Optional

Options

Barcode Scanner	NA
Smart card reader	Support ISO7816-3 and -4, Optional
RJ45 module	10/100/1000 LAN dongle, Optional
RFID/NFC	ISO/IEC 14443 A/B, 15693/18092
Docking	USB*2(Ver 2.0). Power Jack*1. LAN port*1. Pogo pin: x1, male, for tablet, Kensington*1 Dimension: 175(L)*110(W)* 100(H)mm
Others	Hand strap/Shoulder strap/Vesa mount