

**Video/Audio Capture Card with HDMI Input Channel,  
1920x1080@30p and H.264 Hardware Encoder**

# **HDC-301MS-R10**

## **Quick Installation Guide** **Version 1.0**

September 4, 2015

### **Package List**

HDC-301MS-R10 package includes the following items:

- 1 x HDC-301MS video capture card
- 1 x HDMI input kit (100mm,  $\Phi 5.0 \times 7.0$ mm)
- 1 x Utility CD
- 1 x QIG

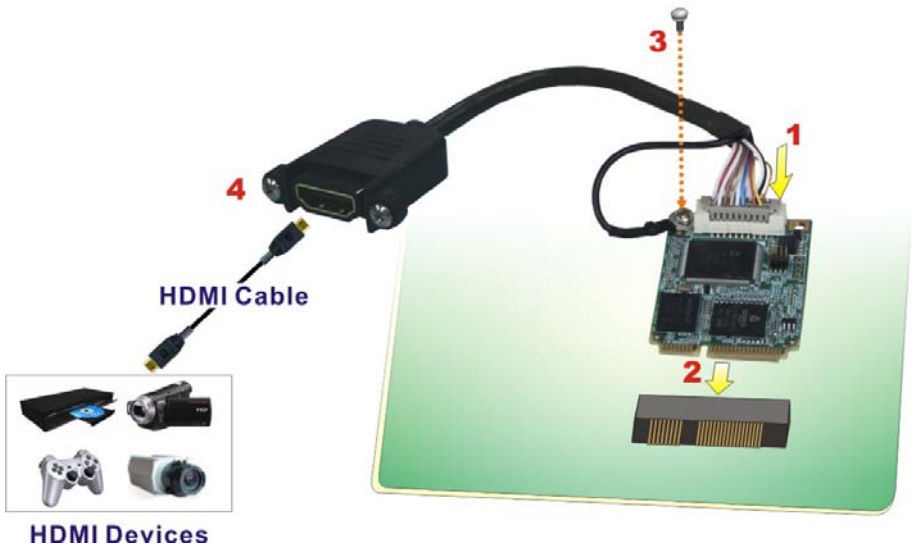


© 2015 Copyright by IEI Integration Corp.  
All rights reserved.

## Hardware Installation

To install the HDC-301MS video capture card into a system and connect the HDMI input cable, please follow the steps below:

- Step 1:** Connect the HDMI input cable to the HDMI input connector on the HDC-301MS.
- Step 2:** Insert into the PCIe Mini slot on the system motherboard.  
Line up the notch on the HDC-301MS with the notch on the connector. Slide the HDC-301MS into the socket at an angle of about 20°.
- Step 3:** Secure the card and the ground cable with a retention screw.  
Push the other end of the card down. Use a screw to secure the ground cable and the card to the motherboard.
- Step 4:** Connect the HDMI cable from the HDMI devices to the HDMI input cable on the HDC-301MS.



## Driver Installation

To install the HDC-301MS driver, please follow the steps below:



### NOTE:

If the **User Access Control** dialog box appears during installation, click Yes to continue.

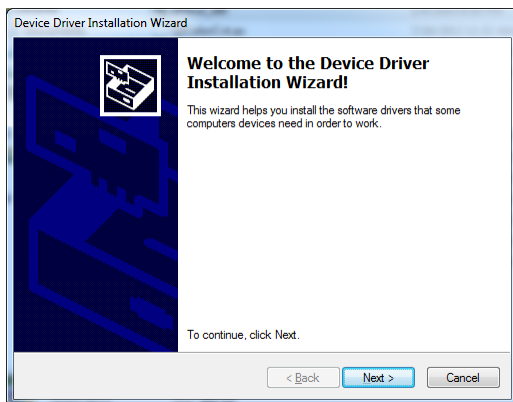
---

**Step 1:** Make sure to log in the system as the administrator.

**Step 2:** Insert the driver CD.

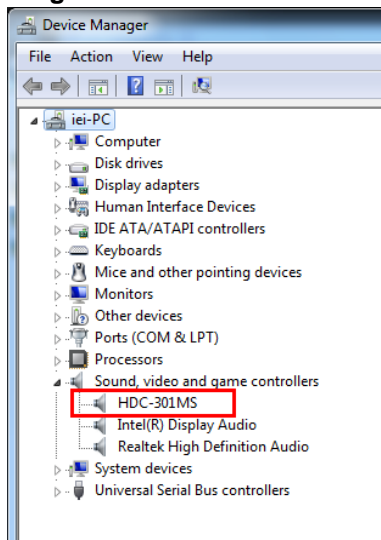
**Step 3:** Locate the .exe file in the driver folder of the utility CD.  
For Windows 7 32-bit OS, please use the **DPIInst\_x86.exe** file.  
For Windows 7 64-bit OS, please use the **DPIInst\_x64.exe** file.

**Step 4:** Double click the .exe file. The Device Driver Installation Wizard window appears. Follow the step-by-step instruction to install the driver.

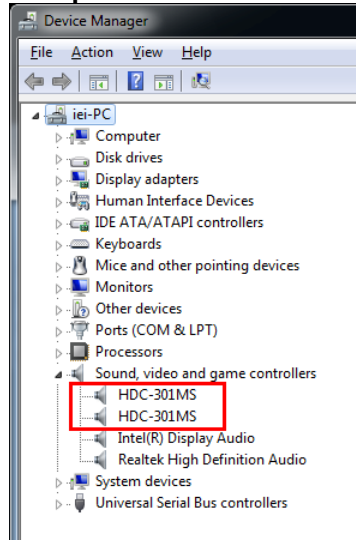


**Step 5:** Check the Device Manager in the Windows control panel to ensure the HDC-301MS driver has been properly installed.

### Single Card:



### Multiple Cards:



### NOTE:

If the user fails to install the driver by following the above procedure, please install the HDC-301MS driver manually in the Device Manager. To do this, right click HDC-301MS in the Device Manager, and select Update Driver Software. Then, specify the **DPInst\_x86.exe** or **DPInst\_x64.exe** file in the utility CD for installation.

## **Software Installation (Windows)**

The HDC-301MS comes with a video capture application – IEI HD Capture AP. This section describes how to install the application in Windows environment.

### **System Requirements**

The supported OS versions are listed below:

- Microsoft Windows 7, 32-bit
- Microsoft Windows 7, 64-bit

After installing the driver, the following programs must be installed in order to use the IEI HD Capture AP demo program:

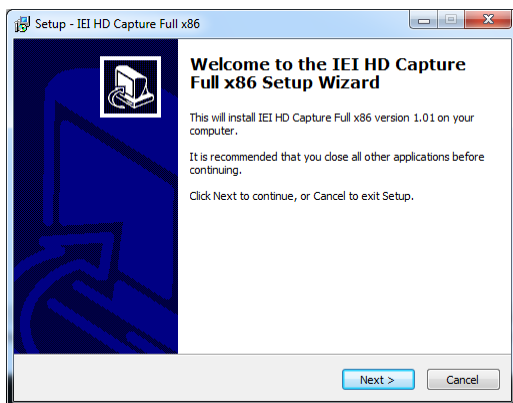
- Microsoft DirectX 9.0c
- Visual C++ 2005 & 2008 Redistributable

Please download the setup files of these programs from the official websites and install these programs in the system.

### **IEI HD Capture AP Installation**

To install the IEI HD Capture AP, please follow the steps below:

- Step 1:** Insert the driver CD. Double click the AP folder of the utility CD.
- Step 2:** Locate the **IEI\_HD\_Capture\_AP.exe** file in the **Release** folder.
- Step 3:** Double click the **IEI\_HD\_Capture\_AP.exe** file. The IEI HD Capture Full x86 Setup Wizard appears. Follow the step-by-step instruction to install the application.



#### **NOTE:**

The IEI HD Capture AP is a video capture demo tool that allows user to capture video through the HDMI input ports in Windows environment, and to setup resolutions. To use the IEI HD Capture AP to capture video, please refer to the Chapter 4 of the user's manual of the HDC-301MS. If the users want to design their own application, please refer to the SDK manual in the utility CD that came with the HDC-301MS.

---

## **Frequently Ask Questions (FAQ)**

- Q:** Capture card, driver, application and input source are all ready, but the recorded video is not displayed or displayed incorrectly.
- A:** In this situation, a H.264 video codec must be installed to display the recorded video -- the ffdshow codec for example.
- Q:** How to know the current DirectX version used on the system?
- A:** In Windows, start Run and type 'dxdiag', then press Enter. You can find the current version in DirectX Diagnostic Tool window.
- Q:** How to obtain the latest drivers?
- A:** Please go to <http://www.ieiworld.com/>. You can always find and download the latest driver from the "Support" page.
- Q:** How to play the encoding file?
- A:** The encoding file is in H.264 format. You need to use a media player or codec that supports H.264 format, such as VLC, ffDShow, etc.
- Q:** Where are the AP & SDK & sample code?
- A:** AP & SDK & sample code are in the folder which you specify when installing AP. The default path is C:\ IEI HD Capture AP.