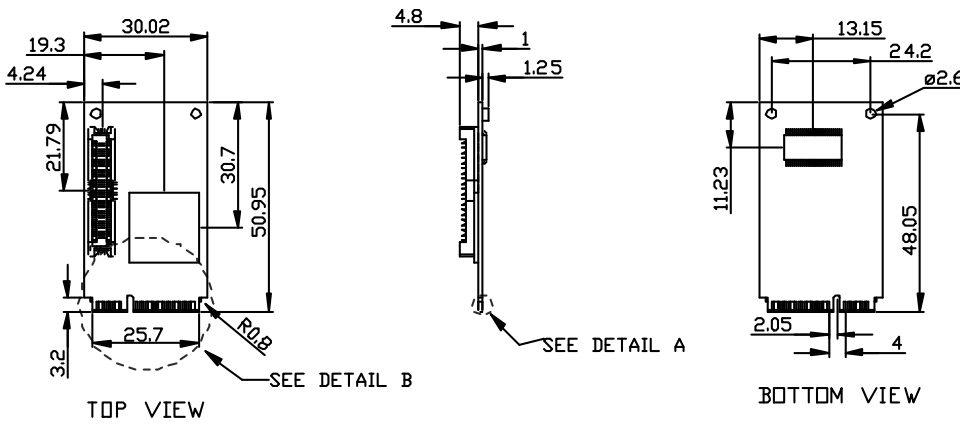


Features

- VGA Output up to 1920x1080, up to 75Hz vertical rate.
- 18 bit LVDS supports up to 1600 x 1200.
- Allow for 90°, 180°, and 270° rotation of on-screen images.
- 30μ" golden finger, 3 years warranty.
- Industrial design. Manufactured in innodisk Taiwan.

Mechanical Drawing



18 bits LVDS + VGA

Signal	Pin	Pin	Signal
+5V	2	1	+3.3V
+5V	4	3	+3.3V
I2C_DATA	6	5	I2C_CLK
GND	8	7	GND
LVDS_D0+	10	9	LVDS_D1+
LVDS_D0-	12	11	LVDS_D1-
GND	14	13	GND
LVDS_D2+	16	15	LVDS_D3+
LVDS_D2-	18	17	LVDS_D3-
GND	20	19	GND
R_0	22	21	B_0
G_0	24	23	
GND	26	25	GND
H_Sync	28	27	DDC_SCL
V_Sync	30	29	DDC_SDA
GND	32	31	GND
LVDS_CLK+	34	33	
LVDS_CLK-	36	35	
GND	38	37	GND
	40	39	

Specifications

Headquarters (Taiwan)
 5F., No. 237, Sec. 1, Datong Rd.,
 Xizhi Dist., New Taipei City 221,
 Taiwan
 Tel: +886-2-77033000
 Email: sales@innodisk.com

Branch Offices:

USA
usasales@innodisk.com
 +1-510-770-9421

Europe
eusales@innodisk.com
 +31-040-282-1818

Japan
jpsales@innodisk.com
 +81-45-594-7581

China
sales_cn@innodisk.com
 +86-755-21673689

www.innodisk.com

© 2014 Innodisk Corporation.
 All right reserved. Specifications
 are subject to change without
 prior notice.

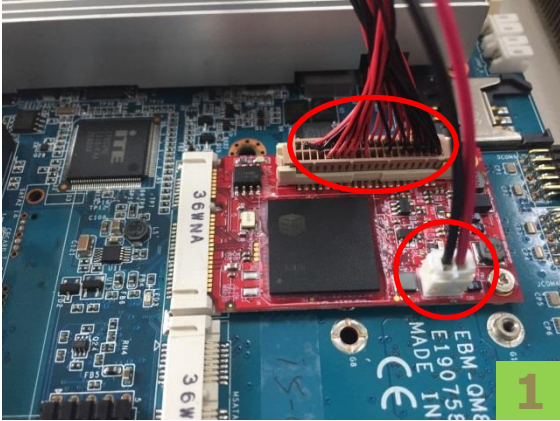
June 22, 2015

Form-Factor	mini PCIe
Input I/F	PCI Express 1.0
Output I/F	VGA, 18 bit LVDS
Output Connector	40pin 1.25mm (40DP-1.25)
Controller	SM750
TDP	1.32W(3.3V x 400mA)
Dimension (WxLxH)	50.95 x 30 x 8.2 mm, Weight: 8.5g
Temperature	Operation: STD: 0°C ~ +70°C
Environment	Vibration: 5G @7~2000Hz, Shock: 50G @ 0.5ms
Notes	Need to connect external 5V power for LVDS panel. OS Support : Windows XP (32 bit), Windows 7 (32/64 bit), Windows 8 (64 bit), Linux Ubuntu 12.10(64 bit), Linux Fedora 18, Linux RedHat Enterprise 6.3. Please download driver from Myinnodisk website.

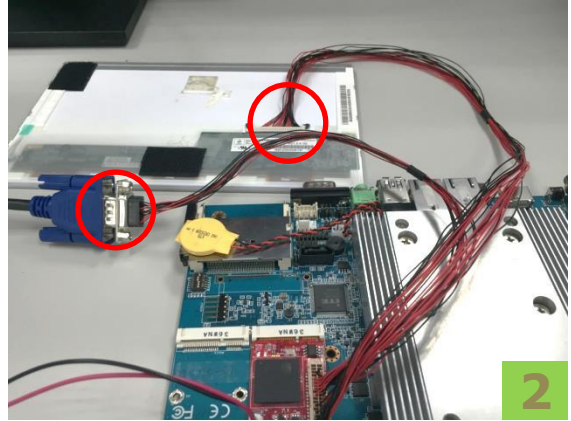
Order information

EMPV-1202-C1
 mPCIe to VGA & 18 bit LVDS module

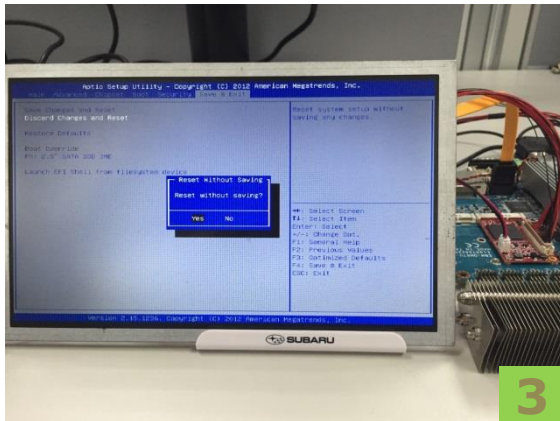
Installation Guide



Connect the power cable and panel cable to the module.



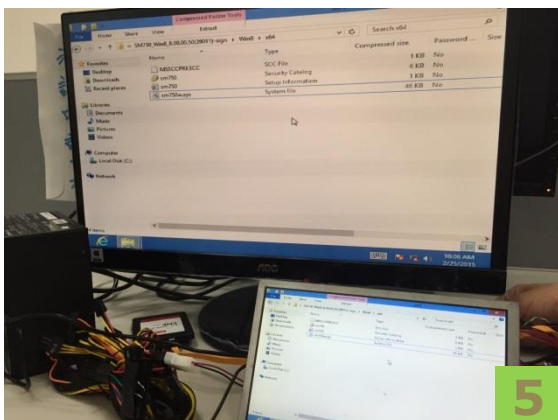
Connect VGA output to VGA monitor and LVDS output to LVDS panel.



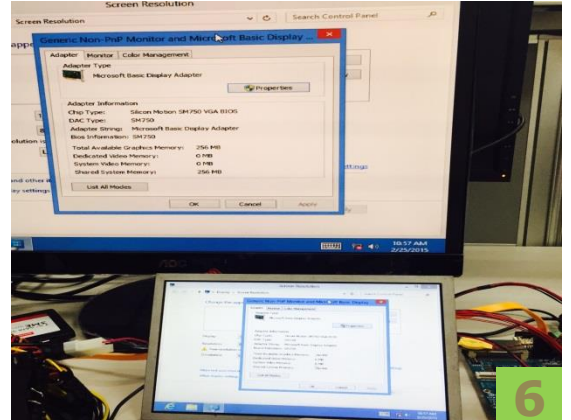
In BIOS setting, make sure that your system is boot from EMPV-1202.



If necessary, follow below procedure to change resolution of panel on VGA monitor. (Please contact innodisk FAE to check VBIOS if the panel doesn't work properly.)



After Installing driver, you will see the display in OS.



You can manage Extended/Cloned desktop, change resolution and orientation in OS.

Changing Resolution for different LVDS Panels :

The default resolution of EMPV-1202 is **1024 * 600**. Please follow below steps to change it if necessary.

- Please execute "**LOADBIOS.exe**" under DOS environment.
- Select "**3. Read BIOS from Serial ROM** " to check default resolution.
- Select "**2. Save**" to save current configuration. (Ex. EMPVTest.rom)
- Select "**1. Load BIOS Binary**" and enter configuration name. (Ex. EMPVTest.rom)
- Choose "**Y**" when "**Do you want to change the BIOS ?** " occurs.
- Select the resolution of your panel.
- Select the type of the panel. ("0" for VGA)
- Save the configuration with a new name.
- Select "**5. Program ROM**". Reboot after completion.