

korenix

A Beijer Electronics Group Company

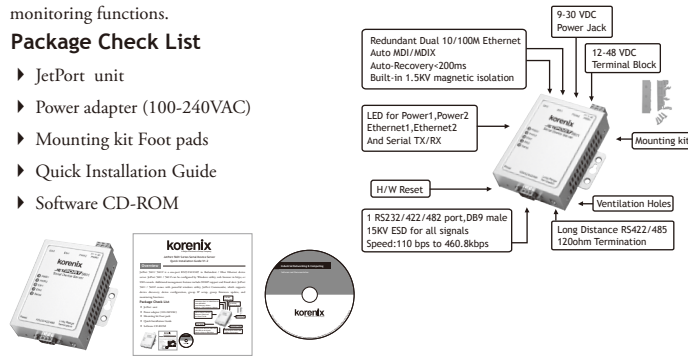
JetPort 5601 Series Serial Device Server Quick Installation Guide V1.2

Overview

JetPort 5601/ 5601f is a one-port RS232/422/485 to Redundant / Fiber Ethernet device server. JetPort 5601 / 5601f can be configured by Windows utility, web browser in https, or SSH console. Additional management features include SNMP support and Email alert. JetPort 5601 / 5601f comes with powerful windows utility, JetPort Commander, which supports device discovery, device configuration, group IP setup, group firmware update, and monitoring functions.

Package Check List

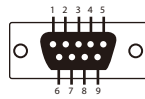
- ▶ JetPort unit
- ▶ Power adapter (100-240VAC)
- ▶ Mounting kit Foot pads
- ▶ Quick Installation Guide
- ▶ Software CD-ROM



Installation

Mount the unit

- ▶ Wall-mount: Use the screws to mount the ear on the wall.
- ▶ Din-Rail: Screw the din-rail to the ears and mount to the rail.



Power the unit and connect to network and serial device

1. Connect the PWR1 / PWR2, the unit will power on and the PWR1 / PWR2 LED will turn Red to show unit booting up. When the unit is ready, the LED turns Green.

2. Connect JetPort 5601 to Ethernet 1 / 2 by standard 10/100M Ethernet cable or Multi-mode / Single-mode Fiber (JetPort5601f). The Ethernet interface supports auto MDI/MDIX. The Eth 1 / Eth 2 LED will turn Orange for 10M Ethernet or Green for 100M Ethernet.

Pin #	RS232	RS422	RS485 (4 wire)	RS485(2 wire)
1	DCD	RXD-	RXD-	
2	RXD	RXD+	RXD+	
3	TXD	TXD+	TXD+	DATA+
4	DTR	TXD-	TXD-	DATA-
5	GND	GND	GND	GND
6	DSR			
7	RTS			
8	CTS			
9	RI			
RS232 mode act as DTE				

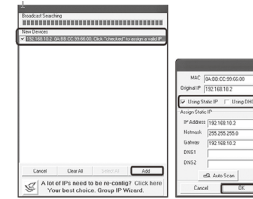
3. Connect the serial device to the unit DB9 male port by the pin assignment table. The Long-Range Termination switch can configure 120ohm termination for RS422 / 4-wire RS485 / 2-wire RS485.

DIP 1	DIP 2	120ohm Termination Configuration
ON	ON	120ohm Terminator for Long Distance 4-wire RS485 / RS422
ON	OFF	This setting will cause ERRORS !
OFF	ON	120ohm Termination for Long Distance 2-wire RS485
OFF	OFF	No Termination for RS232/422/485 (short distance)

Software Setup

Install JetPort Commander

Insert the CD and auto-run the program. If the setup does not auto-run, select "JetPort 5601", and "Operation System", run JetPort Setup.exe to install Windows utility, JetPort Commander.



Find the JetPort unit

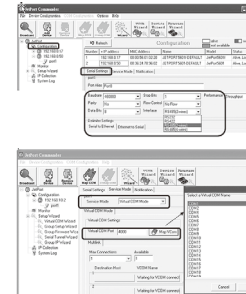
JetPort Commander will broadcast the network and search all available JetPort units in the network.

Configuring the JetPort unit

1. Click on the JetPort unit and select "Add" for further configuring the unit.
2. Select "Static IP" if you want to specify the network parameters, or select "DHCP", or "BootP" if you want dynamic configuration for the JetPort unit.

Configuring the serial port

1. Go to "Configuration", and choose the "device" and the "port". Select "Serial Settings" to configure the serial parameters.
 2. Select "Service mode" and map the port to Virtual COM if you select "Real/Virtual COM" mode.
- Congratulations! You have finished JetPort configurations. You can also use web or telnet console by the JetPort IP address.



Support

5 Years Warranty

Each of Korenix's product line is designed, produced, and tested with high industrial standard. Korenix warrants that the Product(s) shall be free from defects in materials and workmanship for a period of five (5) years from the date of delivery provided that the Product was properly installed and used.

This warranty is voided if defects, malfunctions or failures of the warranted Product are caused by damage resulting from force measure (such as floods, fire, etc.), other external forces such as power disturbances, over spec power input, or incorrect cabling; or the warranted Product is misused, abused, or operated, altered and repaired in an unauthorized or improper way.

Attention! To avoid system damage caused by sparks, please DO NOT plug in power connector when power is on.

The product is in compliance with Directive 2002/95/EC and 2011/65/EU of the European Parliament and of the Council of 27 January 2003 on the restriction of the use of certain hazardous substances in electrical and electronics equipment (RoHS Directives & RoHS 2.0).

Korenix Customer Service

KoreCARE is Korenix Technology's global service center, where our professional staffs are ready to solve your problems at any time. Korenix global service center's e-mail is KoreCARE@korenix.com.

For more information and documents download please visit our website:

<http://www.korenix.com/downloads.htm>

导言

JetPort 5601 / 5601f 是一款一口RS232 / 422 / 485串口设备转冗余双网 / 光纤连网服务器。

JetPort 5601 / 5601f 可以透过Windows Utility · Web https · 或者SSH Console进行设置。另外 · 管理功能还支持包括SNMP和Email报警等。JetPort 5601 / 5601f拥有强大的Windows管理工具JetPort Commander · 它支持批量的设备识别 · 系统设置 · IP设定 · 固件升级及设备监控等功能。

产品清单

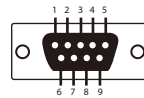
- ▶ JetPort
- ▶ 电源适配器 (100-240VAC)
- ▶ 安装配件与脚垫
- ▶ 快速安装向导
- ▶ 用户手册及软件CD



安装

安装配件

- ▶ 壁挂: 用配备的螺丝钉将JetPort固定在壁挂配件上或直接固定在墙上。
- ▶ 导轨: 用螺丝钉将耳翼固定在导轨上。



电源与网络的连接

1. 使用AC电源适配器或是DC导轨电源 · 为JetPort供电 · 并且其PWR1 / PWR2 指示灯变成红色表示设备正在启动。当指示灯变成绿色 · 表示设备已经准备就绪。

2. 请使用标准的10/100M 以太网线缆将JetPort 5601以太网1 / 2接入网络或是多模 / 单模光纤 (JetPort 5601f) · 或连接主机。以太网接口支持端口自适应MDI/MDIX。此时Eth 1 / Eth 2 指示灯将变成橙色表示10M连接 · 或者绿色100M连接。

3. 依据RS232/422/485针脚排序表 · 将串口设备连接到 JetPort DB9公串口。长距离终端电阻指拨可以设定RS422 / 两线RS485 / 四线RS485 的120ohm电阻。

Pin #	RS232	RS422	RS485 (4 wire)	RS485(2 wire)
1	DCD	RXD-	RXD-	
2	RXD	RXD+	RXD+	
3	TXD	TXD-	TXD+	DATA+
4	DTR	TXD-	TXD-	DATA-
5	GND	GND	GND	GND
6	DSR			
7	RTS			
8	CTS			
9	RI			

RS232 mode act as DTE

DIP 1	DIP 2	120ohm Termination Configuration
ON	ON	120ohm Terminator for Long Distance 4-wire RS485 / RS422
ON	OFF	This setting will cause ERRORS !
OFF	ON	120ohm Termination for Long Distance 2-wire RS485
OFF	OFF	No Termination for RS232/422/485 (short distance)

软件设置

安装JetPort Commander

插入光盘自动运行程序。如果安装程序没有自动运行 · 请选择 "JetPort 5601" / "Operation System", 运行JetPort Setup.exe来安装Windows管理工具

JetPort Commander。

查找JetPort

JetPort Commander 将会发出广播查找网络中所有可用的JetPort 设备。

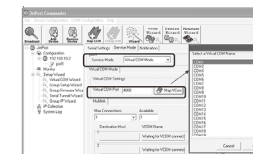
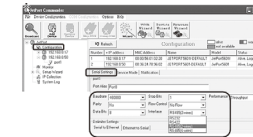
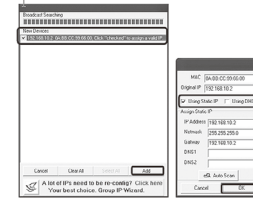
设置JetPort

1. 单击JetPort 单元选择"Add"进行进一步的设置。
2. 如果你想使用指定的网络参数 · 请选择"Static IP" · 或者选择 "DHCP" · 或"BootP" 对JetPort参数进行自动设置。

设置串口

1. 切换到端口界面 · 选择"Serial Settings"来设置串口参数。
2. 选择"Service mode"中的"Real/Virtual COM"模式 · 你可以将端口重排成虚拟的COM口。

恭喜! 你已经完成了JetPort的设置。你现在可以使用JetPort的IP地址 · 透过Web浏览器或者Telnet Console登录JetPort了。



客户服务

5年质保

所有科洛理思产品的设计 · 制造及测试都是采用较高的工业标准。科洛理思保证自产品出货日起提供最高5年之免费保修服务 · 保修期间如因零件损坏或制程不良而导致产品故障 · 我们将提供免费维修服务。

然而 · 自然外力(火、水、雷灾)所造成的产品故障 · 或其它外部因素如电源干扰 · 不当电源输入 · 不当接线等造成的损坏 · 不列入产品保固范围; 此外 · 产品被误用 · 未经授权的修理及修改等行为将造成保固条款失效。

注意! 请勿于电源开启时插拔接线端子 · 以避免产生火花造成系统损坏。

此产品保证完全符合欧盟2003年1月27日电气和电子设备有害物质限制委员会所提出的限用指令2002/95/EC(ROHS禁令)及2011/65/EU(RoHS 2.0)。

Korenix售后服务

KoreCARE 是科洛理思科技全球服务中心 · 我们专业的技术人员随时准备解答您的疑问。科洛理思全球服务中心 EMAIL: KoreCARE@korenix.com

详细说明及文件请至网站下载: http://www.korenix.com.cn/support_downloads.htm

业务服务: sales@korenix.com.cn

官网: www.korenix.com.cn

Korenix Technology Co., Ltd.

(A Beijer Electronics Group Company)

Tel: +886-2-89111000

Fax: +886-2-29123328

Business service: sales@korenix.com

Customer service: koreCARE@korenix.com

www.korenix.com

CPQ00P5601001

Patent No. (Taiwan):
 Granted Invention: I 313547
 Granted Invention: I 321415
 Granted Invention: I 344766
 Granted Invention: I 346480
 Granted Invention: I 356616
 Granted Invention: I 364684
 Granted Invention: I 376118
 Granted Invention: I 393317
 Granted Invention: I 398066
 Granted Invention: I 398125
 Granted Invention: I 459757
 Utility Model: M 339841
 Utility Model: M 339840